



ARCHDIOCESE
of MILWAUKEE

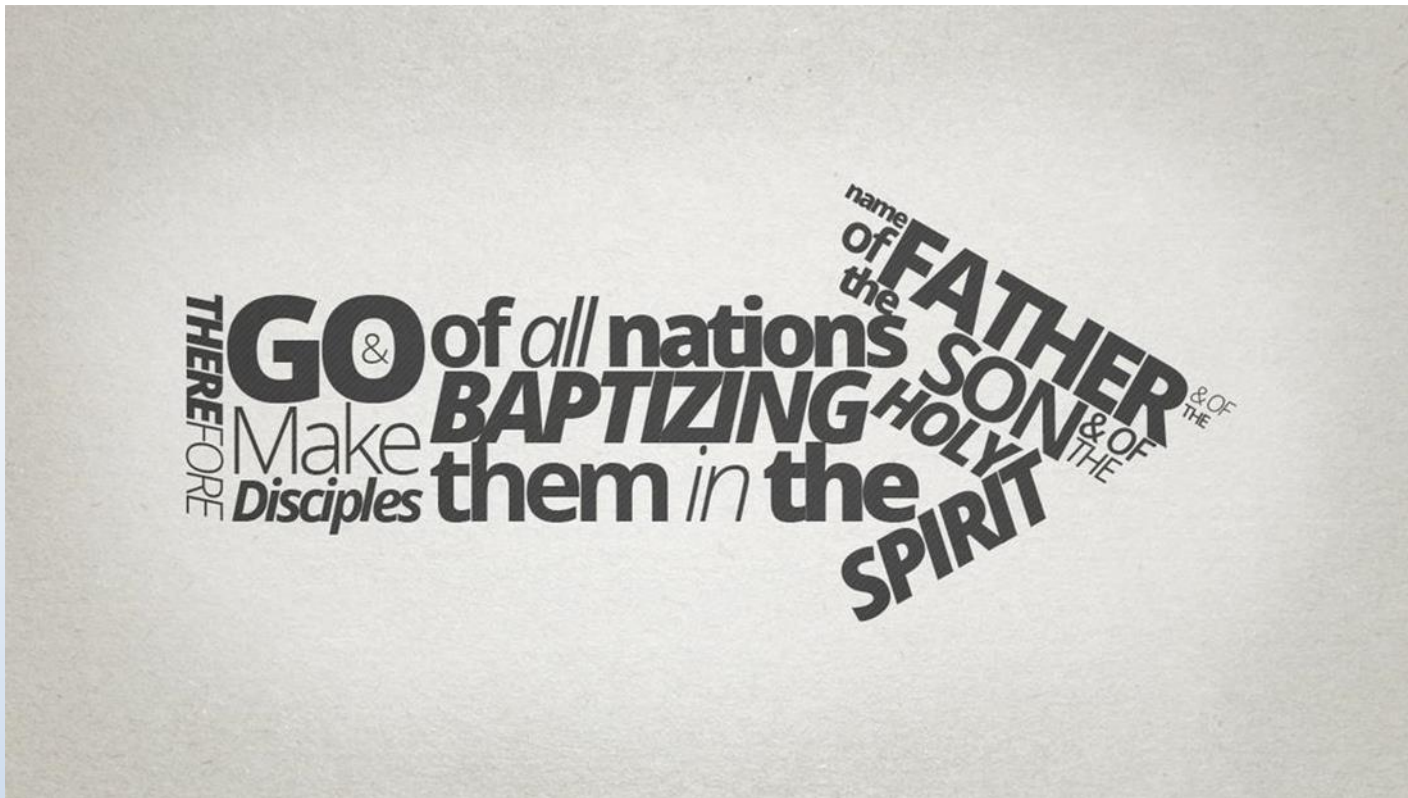
Parish Councils Congress

Effective Councils: Mission, Structure, Resources

November 19, 2022

Laura Engel, Director
Missionary Planning and Leadership

Our Mission through Baptism



“Different members of the Body of Christ, each with his own unique gifts, charism, vocation, or state in life, must learn to work in concert in service to the mission for which we all share responsibility by virtue of our Baptism.”

- Stephen P. White
The Catholic Thing

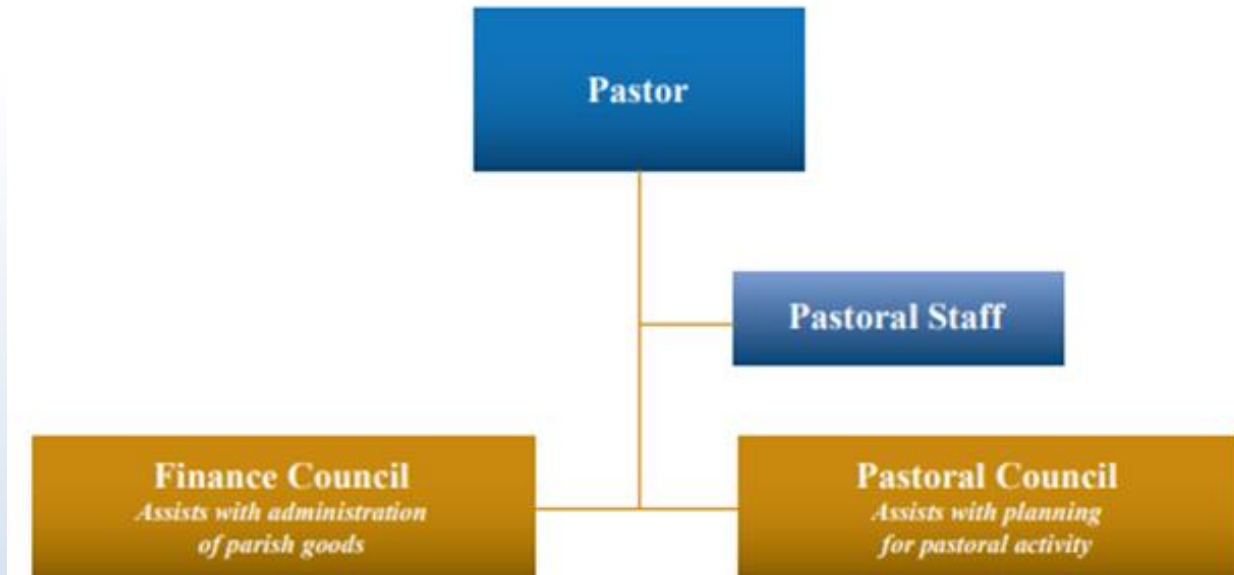
“This is the idea behind synodality at its best:
strengthen communion through broad
participation for the sake of mission.”

- Stephen P. White
The Catholic Thing

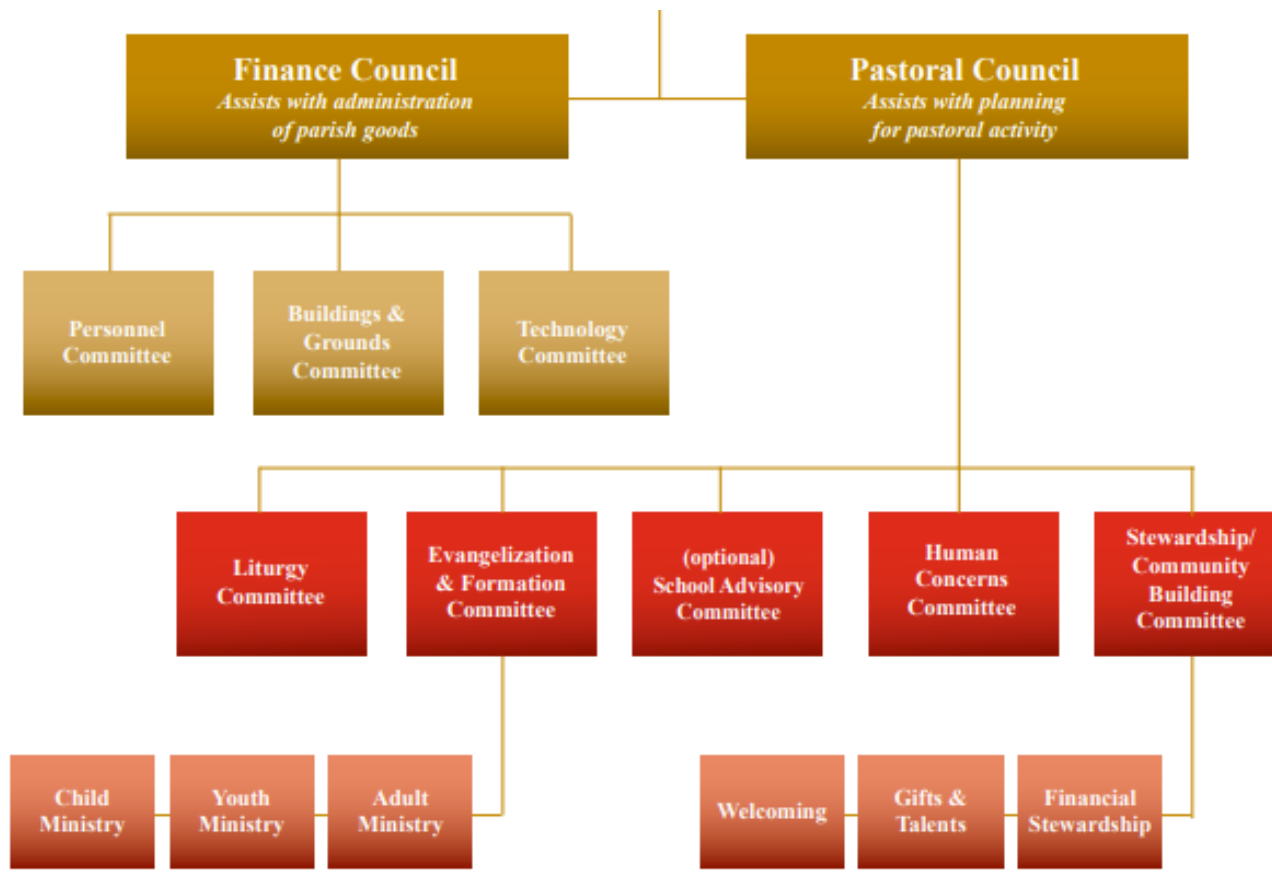
Ignite, Renew and Energize Christ's Mission Everyday

- We are called to leadership
- We are sent to carry out the mission of Jesus and the Church
- The Church is organized to carry out the mission

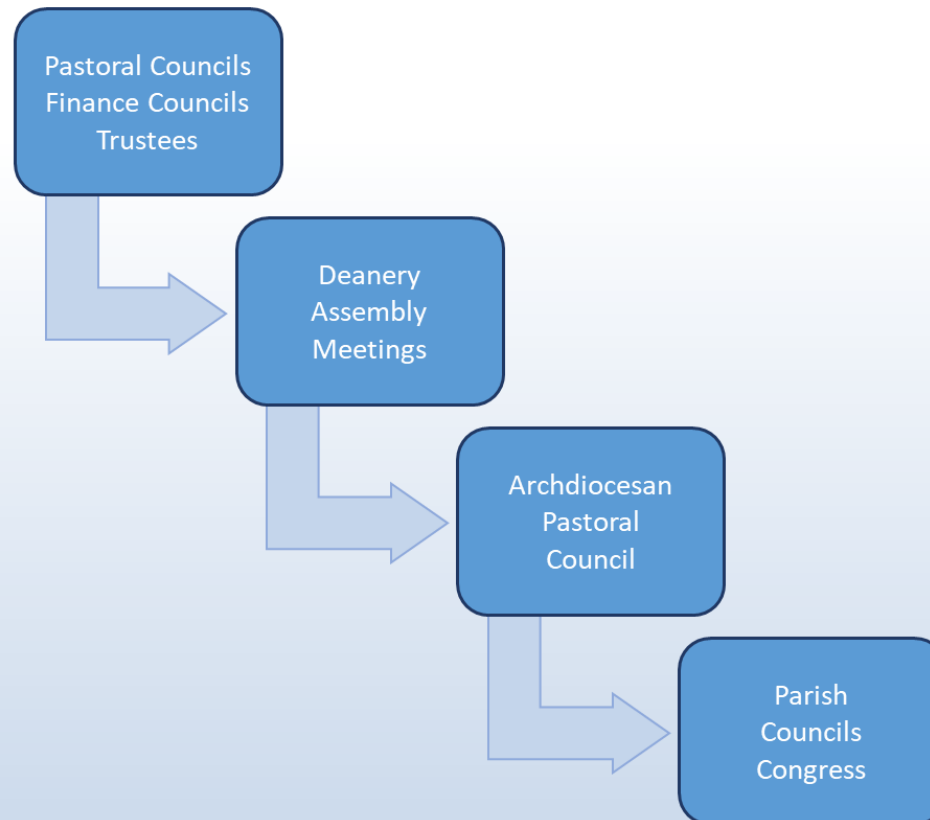
Parish Organizational Chart



Councils Organizational Chart



Councils and the Archdiocese



Purpose of Finance Council

The Council makes sure there are funds to carry out the mission.

1. Provides advice and guidance to the pastor on administration of parish assets
2. Prepares budgets and reviews financial statements
3. Monitors financial condition of the parish
 - Regular financial reviews and audits
 - Internal financial controls
4. Reviews indebtedness
5. Assists with an annual financial report to the parish

Purpose of Pastoral Council

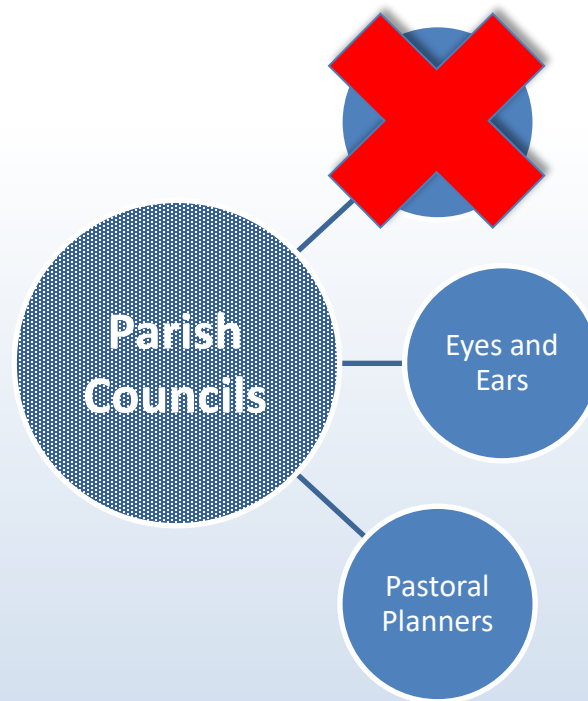
The Council makes sure Christ's mission is being carried out and that parishioners' faith needs are being met.

1. Fulfill the pastoral mission of Jesus
2. Builds a community of disciples
3. Engages in a continuous process of pastoral planning

What Councils Do



What Councils Do



What Councils Do

- Understand the Pastor's vision
- Missionary planning:
 - Formation
 - Share your vision, share it with others
 - Community needs, research
 - Reflect on new initiatives
 - Recommend priorities
- Recruit more leaders
- Plan for sustainability

Qualities of Effective Council Members

- Diversity – reflect the diversity of the larger community
- Gifts, talents – talents for advising, advocating, accomplishing
- Spirituality, passion – deep personal commitment to active prayer and faith

Finding Council Members

- Build relationships
- Nominations
- Elections vs discernment
- Build relationships!

Parish Council “Best Practices”

- Pastor and Council collaborate
- Council is an active part of the parish
- Council is action and change oriented
- Meetings are effective, efficient
- Members are formed, filled with the Spirit

Vibrant parishes have vibrant
pastoral councils.

Vibrant pastoral councils make
vibrant parishes.

How vibrant is your council?

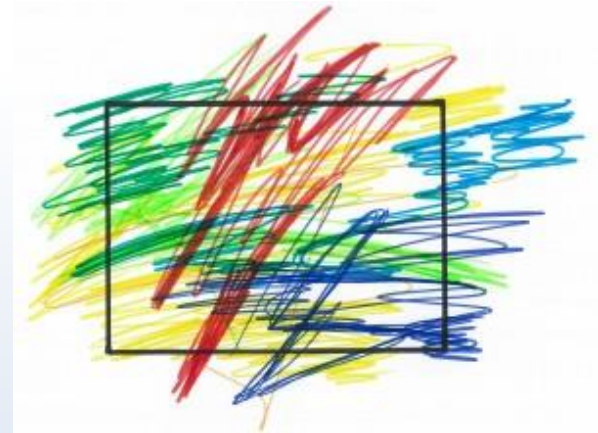
What is one significant accomplishment of your council in the past year?

What is one significant accomplishment of your council in the past year?

What is one goal of your council this year that all council members are aware of?

Color Outside the Box

- Inspire vision
- Allow creativity
- Be innovative
- Have faith



Faith is the realization of what is hoped for
and evidence of things not seen.

Hebrews 11:1

Ask Big Questions Strategize Accordingly

- How are our people being served?
- Who are we not reaching?
- How can we serve better in this area?
- Have our neighborhoods changed?
- What should we be doing that we are not?

What Councils Do

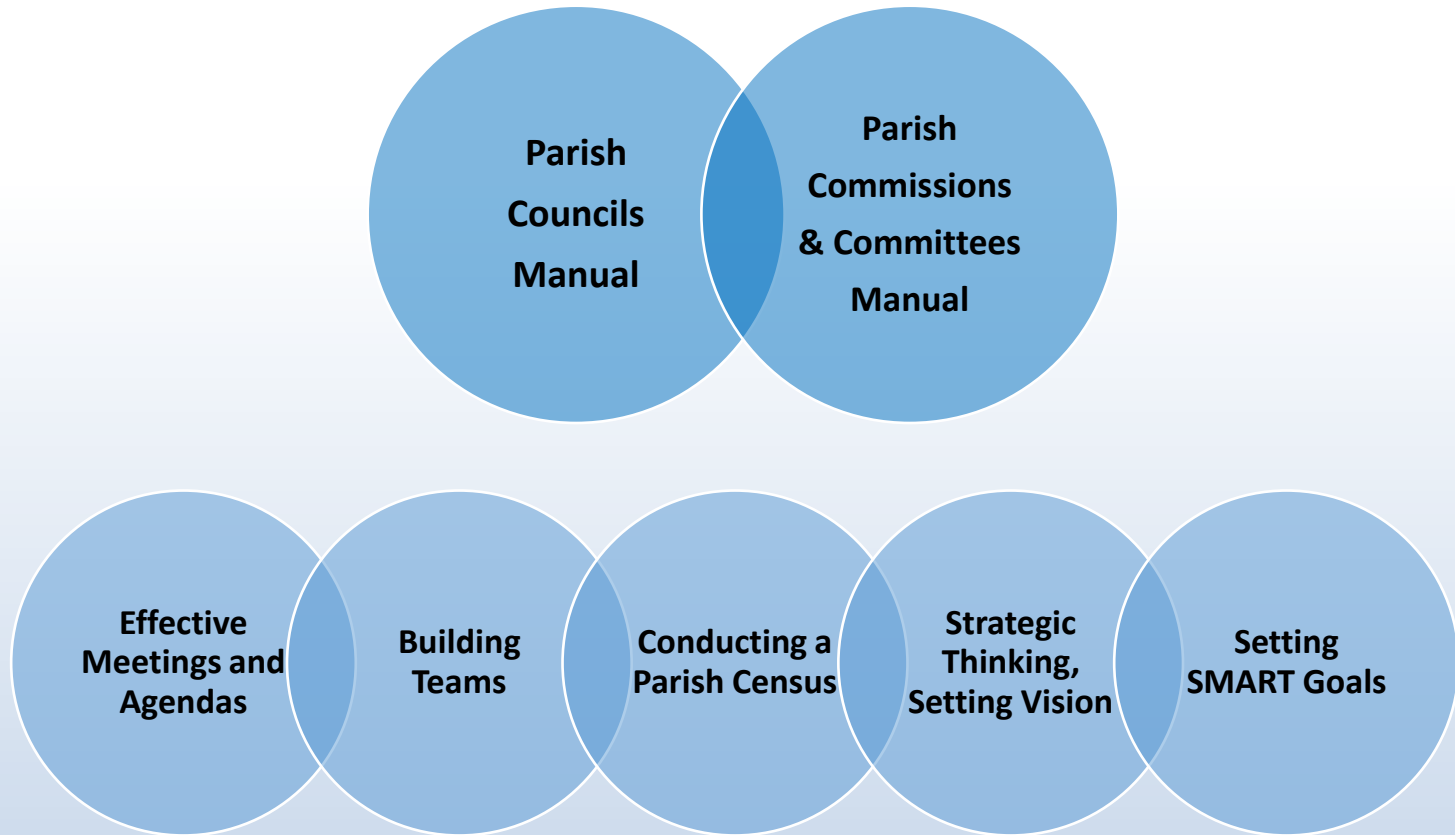


Investigate

Reflect

Recommend

Resources for Pastoral Councils

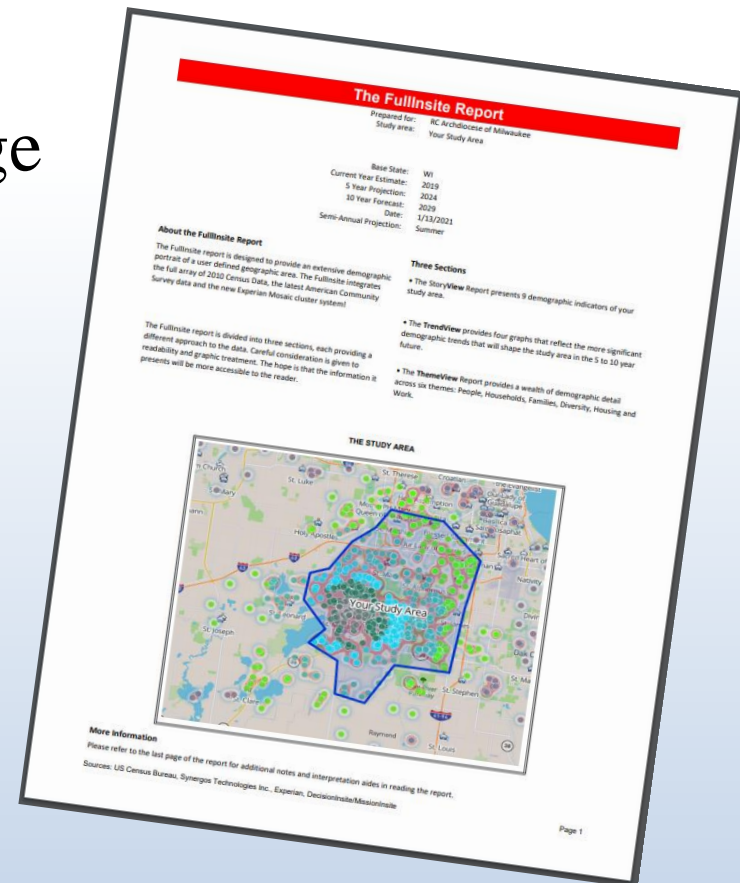




- Demographic community and parish data
- Trend data
- Available to Archdiocesan parishes at no cost

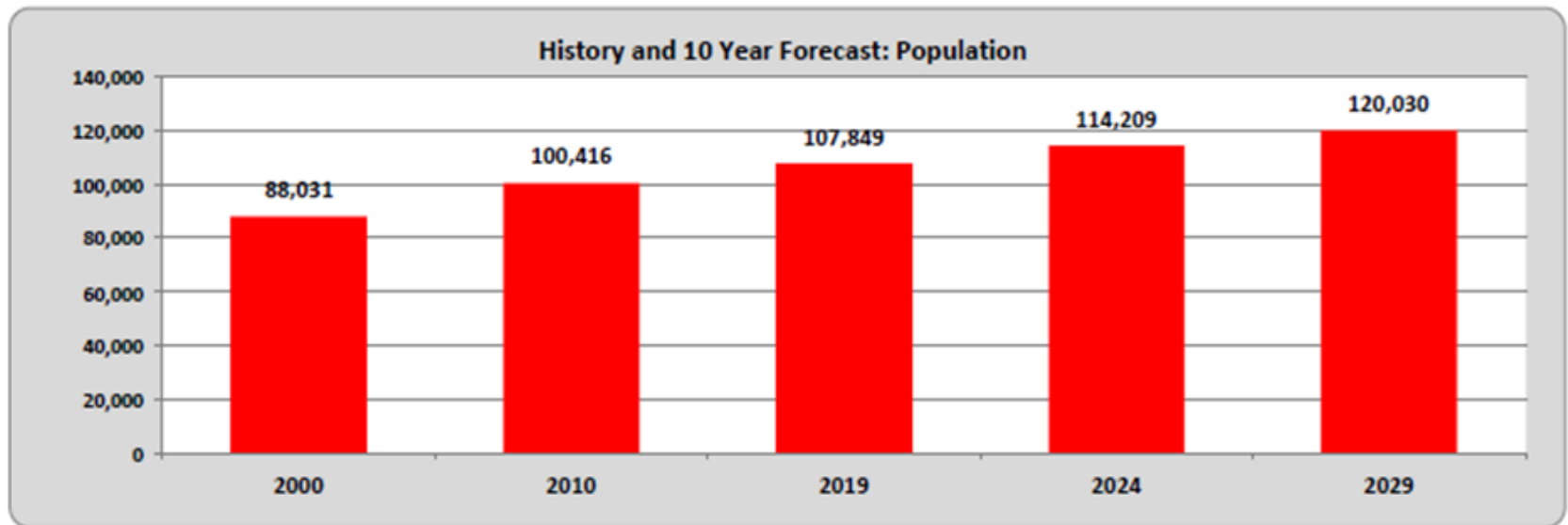
Relevant Data for Planning

- Population Trends, by Age
- Household Structure
- Economic Data
- Race/Ethnicity



Population Trends

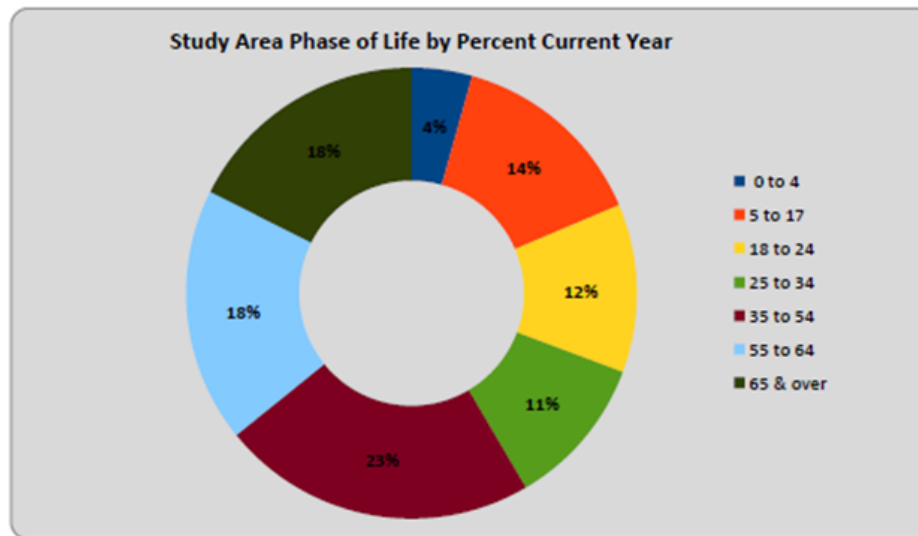
Population History with 5 and 10 Year Projected Change



<i>Population Trends</i>	2000	2010	2019	2024	2029
Study Area Population	88,031	100,416	107,849	114,209	120,030
Population Change		12,385	7,433	6,360	5,821
Percent Change		14.07%	7.40%	5.90%	5.10%
State Population	5,363,677	5,686,986	5,882,073	6,089,025	6,289,935
Population Change		323,309	195,087	206,952	200,910
Percent Change		6.03%	3.43%	3.52%	3.30%

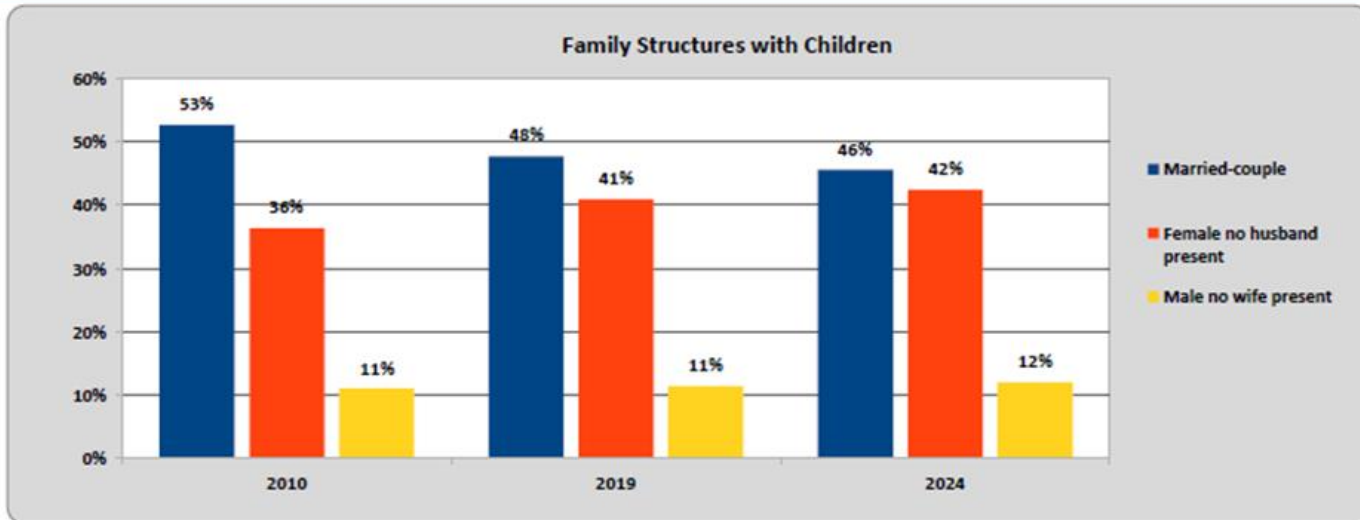
Age Group Distribution and Growth

Current Year Population by Phase of Life



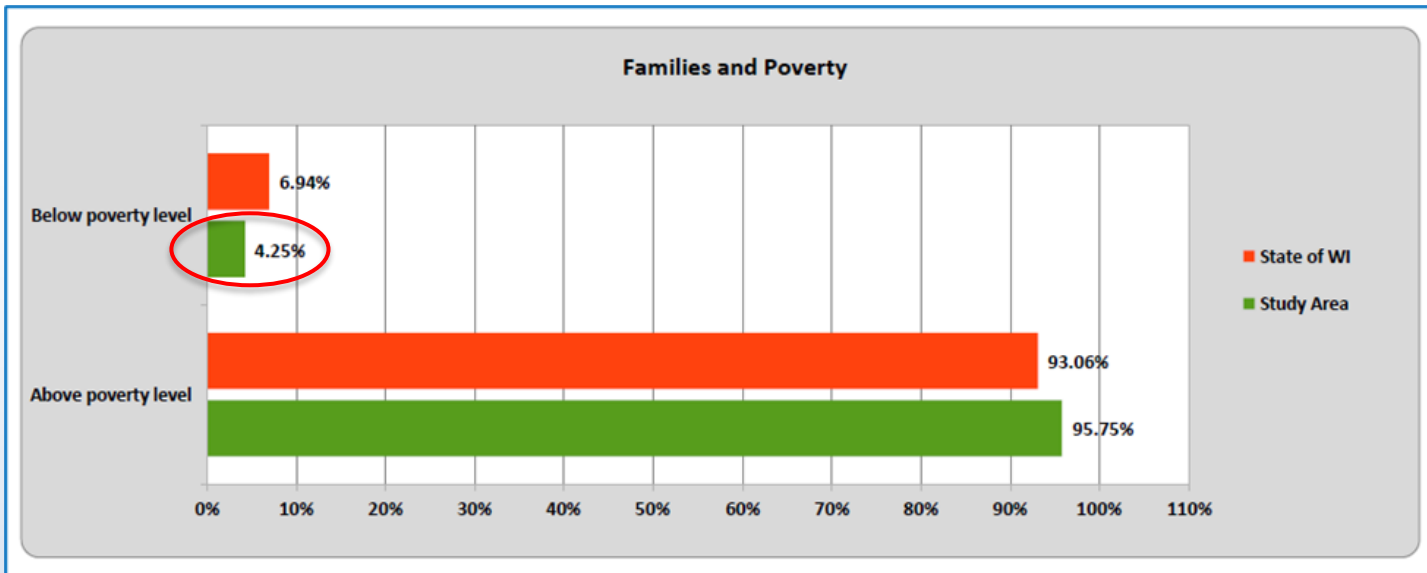
	2010		2019		2024		2029		10 Yr Change
Phase of life Forecast									
Before Formal Schooling: Ages 0 to 4	1,548	5.35%	1,356	4.35%	1,529	4.66%	1,949	5.67%	1.31%
Required Formal Schooling: Ages 5 to 17	6,201	21.43%	4,445	14.27%	3,921	11.95%	3,967	11.53%	-2.74%
College/Career Starts: Ages 18 to 24	1,873	6.47%	3,760	12.07%	3,432	10.46%	2,659	7.73%	-4.34%
Singles and Young Families: Ages 25 to 34	2,381	8.23%	3,377	10.84%	4,887	14.90%	5,410	15.73%	4.88%
Families/Empty Nesters: Ages 35 to 54	9,831	33.97%	7,054	22.65%	5,944	18.12%	6,405	18.62%	-4.03%
Enrich Years Singles/Couples: Ages 55 to 64	3,962	13.69%	5,680	18.24%	5,731	17.47%	4,741	13.78%	-4.46%
Retirement Opportunities: Age 65 and over	3,142	10.86%	5,471	17.57%	7,360	22.44%	9,271	26.95%	9.38%
Totals:	28,938	100.00%	31,143	100.00%	32,804	100.00%	34,402	100.00%	

Household Structure



	Study Area							WI	Comp Index
	2010		2019		2024	5 Yr Chg	2019	CY	
Families with Children by Type									
Married-couple	3,906	52.63%	3,071	47.69%	3,041	45.61%	-2.08%	68.16%	70
Female no husband present	2,698	36.35%	2,632	40.87%	2,826	42.38%	1.51%	22.34%	183
Male no wife present	818	11.02%	737	11.44%	801	12.01%	0.57%	9.50%	121
Totals:	7,422	100.00%	6,440	100.00%	6,668	100.00%		100.00%	
Families with No Children by Type									
Married-couple	4,048	73.84%	4,414	70.38%	4,664	69.48%	-0.90%	84.21%	84
Female no husband present	934	17.04%	1,230	19.61%	1,345	20.04%	0.42%	10.48%	187
Male no wife present	500	9.12%	628	10.01%	704	10.49%	0.47%	5.31%	188
Totals:	5,482	100.00%	6,272	100.00%	6,713	100.00%		100.00%	

Economic Data



Race/Ethnicity

	Study Area					
	2010		2019		2024	
Racial/Ethnic Trends						
Asian (Non-Hisp)	2,374	2.68%	2,772	3.06%	3,117	3.38%
Black/African American (Non-Hisp)	14,005	15.83%	14,016	15.48%	14,014	15.20%
White (Non-Hisp)	65,747	74.30%	66,876	73.88%	67,782	73.52%
Hispanic or Latino	3,759	4.25%	4,066	4.49%	4,351	4.72%
Pac Is/Am Ind/Oth (Non-Hisp)	2,607	2.95%	2,792	3.08%	2,929	3.18%
Totals:	88,492	100.00%	90,522	100.00%	92,193	100.00%

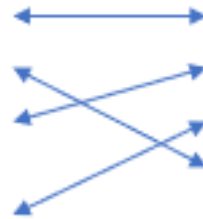
ComparativeInsite Reports

Presence of a Child

Presence of a child 0-3 years	7.0%	806	3.7%	18	53
Presence of a child 4-6 years	6.3%	724	3.8%	18	60
Presence of a child 7-9 years	7.4%	848	4.8%	23	66
Presence of a child 10-12 years	7.0%	805	4.8%	23	68
Presence of a child 13-18 years	11.9%	1,371	9.2%	44	77
	<u>39.5%</u>	<u>4,553</u>	<u>26.3%</u>	<u>126</u>	<u>67</u>

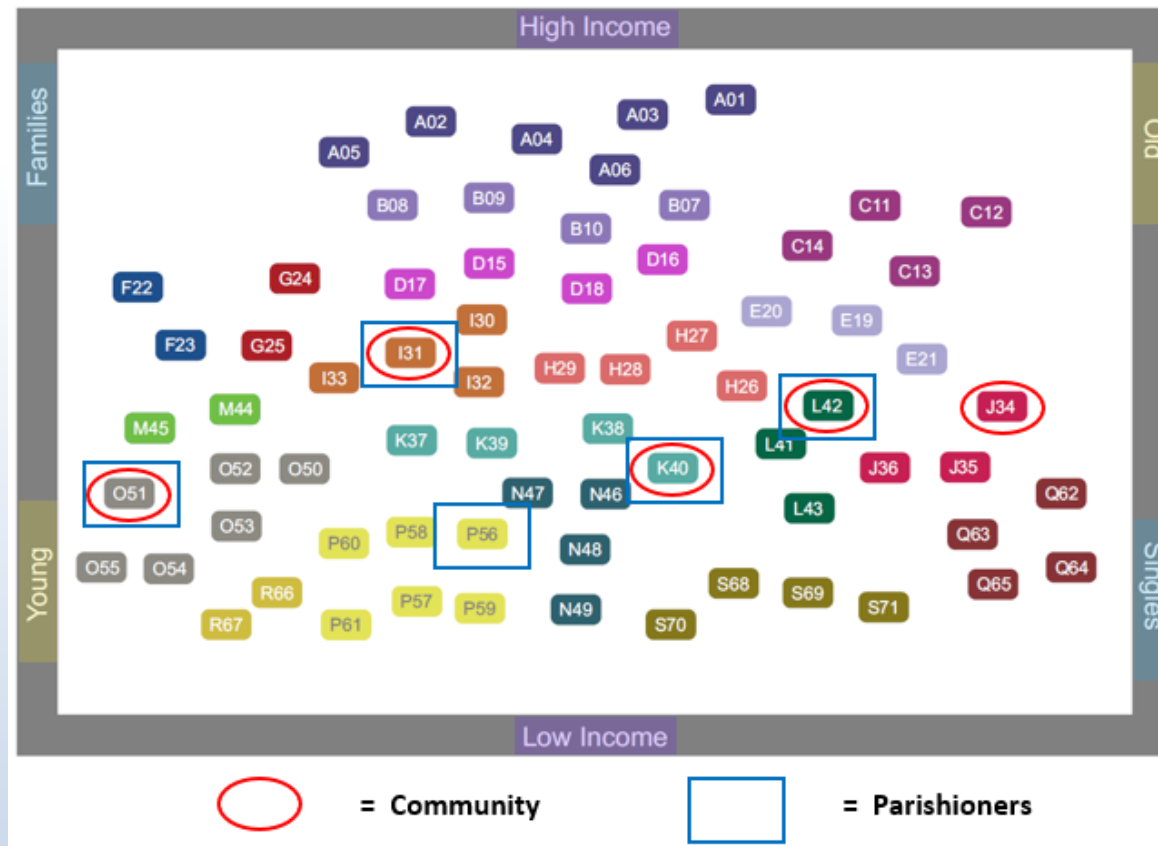
Community and Parish Comparison

Mosaic Segment	Community Composition
Rooted Flower Power	17%
Bohemian Groove	12%
Hard Working Values	11%
Suburban Sophisticates	9%
Digitally Savvy	9%
	58%

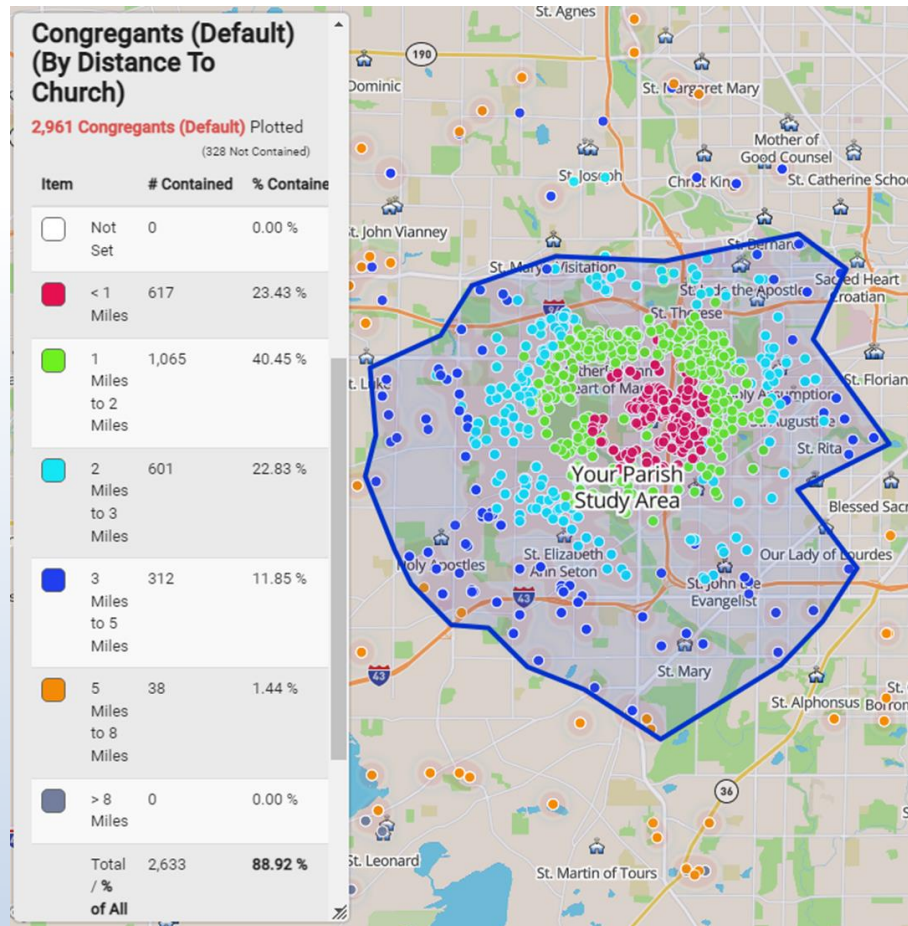


Mosaic Segment	Parishioner Composition
Rooted Flower Power	29%
Hard Working Values	15%
Digitally Savvy	9%
Bohemian Groove	9%
Mid-scale Medley	8%
	70%

Community and Parish Comparison



Mapping Your Community



Register to Use MissionInsite



Thank you!

Many Hands. One Vision.



Catholic Stewardship Appeal

Archdiocese of Milwaukee

*This ministry is funded by the
Catholic Stewardship Appeal.*