



don't copy

THIRD ANNUAL

Archdiocesan
Basketball Tournament

An activity of

**The Holy Name Society's
Catholic Youth Program**



*"The Archbishop's
Classic"*

MARCH 6-14, 1937, Milwaukee, Wis.

OFFICIAL PROGRAM

PRICE 10c

Our Appreciation

We express our sincerest appreciation to our many friends who, by their contribution of money or service, have assisted us in conducting the Third Annual Holy Name Society Archdiocesan Basketball Tournament.

We gratefully acknowledge the many contributions which are not recorded in these pages; we sincerely appreciate the help given us by the advertisers in this Souvenir Program; and we say our thank you to the donors of trophies and medals.

We express our gratitude to the sectional Spiritual and Athletic Directors whose untiring efforts in conducting the various leagues during the past three months have made this Tournament possible; to the Marquette University High School for the generous use of its gymnasium; to our director of the tournament and his assistants; to the committee, the referees, scorer, timer, and clerks.

We assure them all that this note of appreciation comes from the innermost part of our hearts, and we know, too, that they will derive great satisfaction from the thought that they are assisting in a most vital work — opening the gates of an abundant life to our youth.

THE CATHOLIC YOUTH PROGRAM
MILWAUKEE ARCHDIOCESAN UNION
HOLY NAME SOCIETY, INC.

Third Annual

**ARCHDIOCESAN
BASKETBALL TOURNAMENT**

An Activity of

**The Holy Name Society's
Catholic Youth Program**



“The Archbishop’s Classic”



March 6 and 7, 1937

Chamber of Commerce Building
225 E. Michigan Street

March 8 to 14, 1937

Marquette University High School
3401 W. Wisconsin Avenue



DEDICATION

To the Most Reverend Samuel A. Stritch, D. D., our beloved Archbishop, whose genius conceived the Catholic Youth Program; whose zeal inspired the Movement; and whose generous support has sustained its activities, this Tournament is affectionately dedicated, and in recognition of his ardent love and untiring devotion to the boy, it is called the "Archbishop Classic."

TOURNAMENT OFFICIALS

DIRECTOR OF TOURNAMENT

Peter F. Murphy, Jr., *Athletic Director, H. N. S.*

Assistant Director

Fred A. Muth

Arrangements

Harry J. O'Haire

COMMITTEE

Frank M. Bruce, Jr.

Dr. George E. Collentine

Joseph L. Gutmann

Peter N. Heintskill

Edward J. Mullen

Louis B. Rizzo

George F. Sanford

George E. Toner

REFEREES

John H. Fountain, *Chief*

William M. Bell

Florin M. Caulkett

John C. Foti

Peter N. Heintskill

Robert F. Larkin

Francis I. Morgan

Peter F. Murphy, Jr.

Fred A. Muth

Harry J. O'Haire

Francis E. Zummach

SCORER

Joseph L. Gutmann

TIMER

Harold C. Davies

CLERKS

Mathias F. Breitenbach

Charles M. Daly

Anthony J. Faupl

Irvin G. Lehn

Thomas M. McCarthy

Alfred L. Nicoud

Money to Loan

on
Catholic Churches and Institutions
at
Current Low Interest Rates

Conservative Investments

First Mortgage Bonds
of
Catholic Churches and Institutions

B. C. ZIEGLER and COMPANY

Security Bldg. West Bend, Wis.

T. C. ESSER COMPANY

Manufacturers

Paints, Enamels, Varnishes
For All Purposes

Glass -- Mirrors -- Desk Tops

3107 W. Galena St.
Milwaukee, Wis.

709 S. Main St.
Oshkosh, Wis.

103 N. Front St.
La Crosse, Wis.

MILWAUKEE WESTERN FUEL COMPANY

Lakeside 5400

No order too small to receive our
careful attention

Satisfaction Guaranteed

FOR FLAVOR
AND PURITY
LOOK FOR THE NAME

Gridley

GRIDLEY
Properly Pasteurized
MILK AND CREAM

GRIDLEY ICE CREAM
Wide range of delicious
flavor combinations—bulk,
packages and special bricks.

The Catholic Youth Program

LEO F. DOHN

Executive Secretary

The Catholic Youth Program of the Holy Name Society, established by His Excellency, Archbishop Samuel A. Stritch, D. D., on July 6, 1934, is the official youth program for the Archdiocese of Milwaukee. About twenty-seven thousand boys and young men are participating in its program in 178 parish centers.

The program is executed through a central union, sectional divisions, and parish branches. The Union, which is under the immediate supervision of the Most Reverend Archbishop, is the central servicing agency. It plans the details of the program, supervises its execution, and trains and services the volunteer leaders. The Divisions are the intermediaries between the Union and parish branches. They provide a natural field for inter-parish activity. The parish branch is the fundamental unit. Membership in the Holy Name Society, which is the basic requirement for participation in the Catholic Youth Program, is held in the parish branch, and all activities are initiated there.

The activities of the program fall into six generic divisions, the Religious, which is not only basic but which permeates all other activities, the Cultural, the Vocational Guidance, Scouting, Boy Guidance, and Athletic.

The objectives of the program are affirmative. It is founded upon the belief that, when youth is agreeably occupied in a healthy atmosphere with clean companionship, and interested, competent leadership, he will have neither the time nor the inclination to stray from the path of virtue.

Accordingly, the program is composed of activities and not of preambles. It does not substitute slogans for thoughts, nor does it offer mere numerical strength as a camouflage for substantial achievement. It is sufficiently varied and adapted to the differing native aptitudes and tendencies of youth. Its methods are sane, elastic, adequate. It is a workable and a working program.

The program has one consuming ambition—to assist youth in building a permanently satisfying life, a life which is warmly human and deeply spiritual, a life based upon eternal values and verities.

MARQUETTE UNIVERSITY

GRADUATE SCHOOL—Curricula leading to the degrees of Master of Arts, Master of Science, Master of Education and Doctor of Philosophy.

COLLEGE OF LIBERAL ARTS—Four-year curricula leading to the degrees of Bachelor of Arts, Bachelor of Science and Bachelor of Philosophy, and combined curricula leading to a degree in liberal arts and professional degree.

THE R. A. JOHNSTON COLLEGE OF BUSINESS ADMINISTRATION — Four-year curricula in accounting, marketing, finance, and other branches of business administration. Also evening courses for those who are employed.

COLLEGE OF ENGINEERING—Five-year cooperative curricula in civil, chemical, mechanical, and electrical engineering.

COLLEGE OF JOURNALISM—Four-year curricula.

DENTAL SCHOOL—A four-year dental curriculum following two years of pre-dental college studies. A one-year curriculum for dental hygienists.

LAW SCHOOL—A three-year curriculum following three years of pre-legal college studies.

SCHOOL OF MEDICINE—A five-year curriculum following two or three years of pre-medical college studies.

SCHOOL OF SPEECH—Two-year curricula following two years of pre-speech college studies.

COLLEGE OF NURSING—Three and four-year curricula.

SUMMER SESSION—Six weeks' session during June and July.

MARQUETTE UNIVERSITY HIGH SCHOOL—Preparatory Department, Classical, Latin-Modern Language, Latin-English, English, and Scientific curricula.

For Information Address

THE REGISTRAR

1217 W. Wisconsin Ave.

Milwaukee, Wisconsin

The Religious Program

VERY REV. MSGR. JOHN J. CLARK

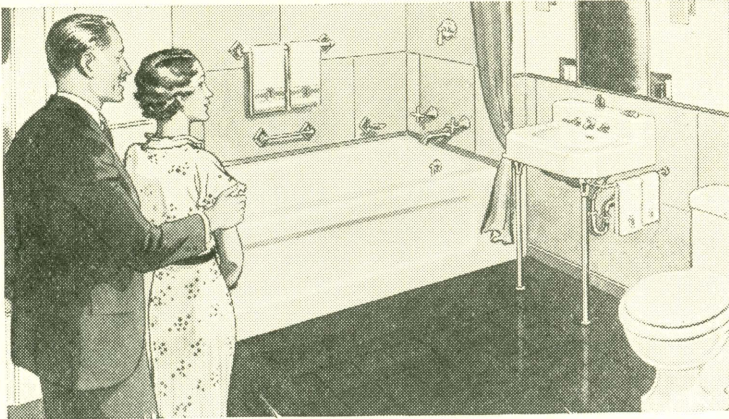
Spiritual Director

The aim of the Catholic Youth Program is to aid boys and young men to grow to the stature of the youthful Christ. Religion, therefore, lies at the very basis of all its activities: religion is the motive power and end of the cultural-social activities as well as of the boy-guidance activities, of the hobby program no less than of the athletics. All these things are simply means to an end, and that end is to provide conditions in which the members can realize and practicalize their religious attitudes and religious knowledge. The whole atmosphere of the program is religious, for it is carried out under the Name, and for the glory, of the Divine Leader, Christ Jesus.

Beyond this more general and informal religious content, however, the program embraces a number of formal, corporate religious activities. The most elementary of these is, perhaps, the recitation of the Holy Name pledge—which is not only a pledge but a prayer—before each meeting. There are quarterly sectional religious demonstrations, the holy hours, days of recollection, triduums, retreats, attendance at special devotions as in the month of October or in Lent, and above all the reception of Holy Communion each month. The value of these group activities, be they confined to parish groups or more widely extended, can scarcely be over-estimated. To the participants themselves they offer not only personal graces but opportunities for carrying out their obligation as members of human society of worshipping God publicly. The effect of this good example on participants and beholders is certainly beneficial.

These religious practices, further, are presented to the members, not as self-imposed works of penance, or as unusual practices of "piety," but as natural and manly expressions of their relation to God. The Holy Name Society, under whose banner the Catholic Youth Program is incorporated, is a man's society, dedicated to the honor of the Man God, and its activities and viewpoints are such as appeal to men.

The religious activities, then, are not a mere addition to the program, but are its heart and its force. In God the program starts, toward God it tends, and in God it must end.



TEAMWORK IN PLUMBING FIXTURES

Each piece in this Kohler matched set works smoothly; but real effectiveness requires the whole well-integrated ensemble. *Center of attention, Metropolitan recess bath teams with Gramercy forward-looking shelf-back lavatory. Quiet Bolton closet guards family bath. Kohler Co., Founded 1873, Kohler, Wis.*

KOHLER OF KOHLER

J. GREENEBAUM TANNING CO.

CHICAGO and MILWAUKEE

EASTMAN KODAK STORES, INC.

EVERYTHING PHOTOGRAPHIC
KODAKS FOR SPORT PICTURES

737 N. MILWAUKEE ST.

232 W. WISCONSIN AVE.

The Social and Cultural Program

WILLIAM M. LAMERS

Cultural Director

The social and cultural activities are intended to be used in cooperation with and to supplement all other activities in the development of a well-rounded, well psychologized, well balanced leisure-time program. Their inclusion in the Catholic Youth Program is justified on four points: First, there are many momentarily engrossing things which boys can carry on in a social and cultural way — things that afford valuable training for adult life; Second, there are many to whom one or several or all of the cultural activities will appeal as none of the other elements of the entire program; Third, an adequate leisure time program must be capable of filling all the leisure time of the boy. It must not spend its usefulness in the few hours of the month devoted to group religious exercises, to meetings, or to highly organized games. The social and cultural program provides among other things individual activities which can be carried on in the home, and which need little equipment. The fourth justification is akin to this: The social and cultural program embraces activities which can be carried out by parishes lacking gymnasiums or expensive athletic equipment.

In the social and cultural group are found the following activities: oratory, debate, dramatics, interpretation, essay writing, music, and a sub-program for the development and expression of hobby interests. Twice a month the individual parish units gather for meetings that are professedly social and cultural. Typical meeting plans have been developed for these and they are so organized as to train the boys in parliamentary procedure.

In addition, each month is set aside for the performance of a specific type of social activity. Thus, one month is devoted to the Catholic missions, another to the Catholic Press, etc. By these it is hoped to teach social living and to reach boys who for any reason cannot or do not participate in the other portions of the program.

In the competitive activities, the social and cultural program observes an elimination system closely paralleling the athletic. For example, in oratory, competition begins in the parish unit. The winning parish orators compete in a divisional contest. Divisional winners in turn are brought together in archdiocesan finals. Each month brings an ever-changing, ever full program.

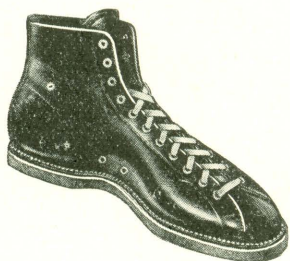
It is worth insisting that the social and cultural activities have been developed in order to provide a full program, for all boys, over the whole year.

Phone
DAly
0149

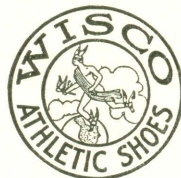
SPORTING GOODS
C. A. Burghardt & Sons
137 E. WELLS ST.
ATHLETIC SUPPLIES

3
Doors
East
of
Bridge

NOW IN OUR NEW ENLARGED STORE



Distributors for
WISCO ATHLETIC
SHOES
and
IMPERIAL QUALITY
SWEATERS



*To Insure Expert Workmanship
In Building Construction*

ENGAGE ONLY THOSE CONTRACTORS WHO
EMPLOY MEMBERS OF THE

Milwaukee Building Trades Council

2218 N. Third Street

Concord 4700

PETER T. SCHOEMANN, President

The Athletic Program

PETER F. MURPHY, Jr.

Athletic Director

The Catholic Youth Program embraces an organized and comprehensive plan of athletic activities. The athletic program is fostered to satisfy the average boy's instinctive craving for athletic competition, and to take advantage of the many opportunities which controlled athletic competition offer for the development of the boy along mental, moral, social, and physical lines. Because of its very nature, this part of our youth program engages the largest number of boys.

Our program recognizes the intimate relation between muscular welfare and health and resulting efficiency. Cognizance is also taken of the fact that vigorous exercise of the primary muscles is required for the proper physical development of the adolescent. We appreciate the fact that if we do not provide a proper outlet, such as athletic competition, for the instinctive demand for violent exercise on the part of the youth, this demand may find satisfaction in some unwholesome manner.

Through our athletic program we aim to develop in our Catholic youth such traits as respect for authority, sportsmanship, a spirit of altruism, loyalty, courage, mental resourcefulness, coolness of temper, self control, determination, justice, cooperation, fair play, clean language, and correct bodily habits. It is also our aim, in the staging of athletic contests, to provide a wholesome source of entertainment and a satisfactory subject for conversation for the spectators at these events.

In order to accomplish the above aims, our program emphasizes team games rather than individualistic or purely competitive athletics into which no team work enters. Therefore, our program stresses such sports as basketball, softball, baseball, and football. However, the program is augmented by such individual sports as track, wrestling, and swimming.

All athletes compete on their own parish teams which play a regular schedule of games throughout the season in divisional leagues. The champions of these leagues are brought together at the close of the season to compete in a tournament for the Archdiocesan championship. This Archdiocesan basketball tournament is but one of many such events conducted by our organization. The forty teams competing in this tournament represent but a fraction of the 250 teams, with a player roster of 3000 boys, who have been playing in regularly scheduled league games since last November.

HERE'S to the KENOSHA CHAMPS

ATTORNEYS

Ruetz & Ruetz, 1001 56th St., Kenosha.....Phone 3821
Shannon & Higgins, 625 57th St., Kenosha.....Phone 4321
Vaudreuil & Tennessen, 611 56th St., Kenosha.....Phone 2201
Lencioni & Lucareli, 304 Orpheum Bldg., Kenosha.....Phone 6736

DENTIST

A. H. Tennessen, 5510 Sixth Ave., Kenosha.....Phone 3513

PHYSICIANS and SURGEONS

Geo. C. Schulte, M. D., 625 57th St., Kenosha.....Phone 6611
C. E. Pechous, M. D., 625 57th St., Kenosha.....Phone 3311
Chas. C. Davin, M. D., 625 57th St., Kenosha.....Phone 3013

ISERMANN BROS.

The Store for Men and Boys

Kenosha, Wisconsin

Compliments

**The First National Bank
of Kenosha, Wis.**

Established 1852.

MEMBERS F. D. I .C.

CHAPEL

AMBULANCE

MISCHLER'S HOME FOR FUNERALS

Office Phone 3811 708 Fifty-seventh St.
Res. Phone 7207 Kenosha, Wisconsin

SPECIALTY BRASS CO.

Dairy Equipment

Kenosha, Wisconsin

MAIN OFFICE AND PLANT
733 E. CAPITOL DRIVE

**Milwaukee Novelty Dye Works
NOVELTY**

CLEANSER - DYERS - FURRIERS
BRANCH TELEPHONE
322 E. Wisconsin, EDGEWOOD
WELLS BLDG. 9400

The Vocational Guidance Program

JOHN P. TREACY

Director, Vocational Guidance

"Blessed is he who has found his work"

What is vocational guidance?

Vocational guidance is any help given to an individual which will assist him better to choose, prepare for, enter upon, and progress in an occupation.

Vocational guidance is not dictation. It is not fortune telling. It is helping individuals to help themselves.

Vocational guidance should assist young men to:

1. formulate a sound interpretation of success
2. analyze themselves
3. analyze their opportunities
4. choose wisely an occupation and a training program
5. find employment
6. progress in the occupation of their choice.

Why is vocational guidance an essential part of a youth program?

On a correct vocational choice depends more than the money one will earn. On this choice depends largely one's future education, his associates, his working conditions. On it depends to a large extent his future service, his character and his happiness. When one chooses a vocation he also chooses a pattern of life.

Youth are called upon to make their vocational choices at an age when they are too young and too inexperienced to do it well. When left unaided, many make mistakes. Some do not choose at all; they just drift. Some choose occupations unsuited to them. Some resort to unethical agencies. Some by their mistakes seriously handicap their prospects for service and happiness.

How does the vocational guidance program assist youth in solving their problems?

The vocational guidance program is designed to encourage youth and parents to study guidance problems. There are in the typical community many opportunities for knowledge and service, if they are utilized. Libraries, service organizations, industries, and the like, are usually very cooperative in these matters.

The Catholic Youth Program, through its Central Office, provides lectures, reading material, conferences, and other services. The extent and forms of these services depend upon the preferences and needs of parishes.

RITZINGER & ERTL

Fuel Merchants

2416 W. Cherry Street WEst 0383
Opposite St. Michael's Parish

The MILWAUKEE DUSTLESS BRUSH CO.

Makers of
"Dustless" and "Speed-Sweep" Brushes
Since 1900
530 N. 22nd St. Milwaukee, Wis.

Compliments of a Friend

Huebsch LAUNDRY CORP.

QUALITY
LAUNDERERS and DRY CLEANERS
1716 N. Arlington Place Phone DAly 3480

R. PANDURO Decorating Co., Inc.

We Recommend and Use

MAUTZ

Paints, Varnishes exclusively

1322 W. State St.
MARquette 0507

PARK SAVINGS BANK

W. Lisbon Ave. at N. 34th St.

QUALIFIES

*to Serve Banking Needs of This Locality
in a Spirit of Mutual Interest*

WE INVITE YOUR PATRONAGE

Member Federal Deposit Insurance Corporation

WM. HARGARTEN AGENCY

INSURANCE

161 W. WISCONSIN AVE. MILWAUKEE

EDWARD J. COUZENS

Attorney

1420 W. Lincoln Avenue
MITchell 8850

W.P. HAMMOND and son INC

Pest Control Services

GEO. L. WEIAND

Funeral Director

3412 W. Center Street
Phone KIlbourn 4010

NEW YORK COFFEE POT

and

TORRES CAFE

— *Quality Lunches* —

STORES EVERYWHERE

*We appreciate the patronage of the
Holy Name Society*

SIETTMANN PRINTING CO.

3273 S. Delaware Ave. SHeridan 6929

KIlbourn 4500

HENRY COOK CO. FUEL

31st Street and Concordia Ave.
BRANCH: 506 TWELFTH ST.
JOHN W. COOK, Se'cy-Treas.

PARKING STATIONS WIDMEYER & FARRELL

316-318 W. Michigan St.
"L" Parking Station
Cor. E. Wells and N. Water Sts.

Low Organized Recreational Program

FRED A. MUTH

Assistant Secretary

A great number of our youth are interested and active in the athletic, social, and cultural activities of our program. These activities are called high organized recreational activities, since participation in them demands considerable ability, skill, and, in most cases, team play. But there are also many boys who do not engage in these activities. Such boys can, quite generally, be attracted to a Low Organized Game or Recreational Program.

This program includes games, contests, relays, races, and meets which involve individual effort, and in which everyone can take part. There are no stars—the more that enter into the spirit of the game the greater is the enjoyment and the more successful the activity. No team play is needed. No practice sessions are required. No expensive equipment is necessary. A trained and competent game leader is the only requirement for the successful conduct of this activity.

In conducting such a program, the game leader, who in most cases is a member of the group, plans the program in advance. He equips himself with a sufficient number of games and relays and conducts them in such order as to alternate with quiet and passive games. The Central Office supplies a trained leader who inaugurates the program in the parishes, and it services the parish leaders with information on games.

The execution of the program is simple. The game leader organizes a number of boys into a game, allows himself sixty seconds to teach the game and then permits the boys to play. Then another group is organized into a new game and so on until everyone is occupied. Thus, a group of seventy-five or more boys can be engaged simultaneously.

This program of games lends itself ideally to an after-meeting entertainment in the parish hall or meeting room. It is also adapted to public demonstrations and permits inter-parochial contests. Experience has proven that this program, which is based upon the play instincts of man, does attract the youth.

CADET TOURNAMENT LINE-UPS

ST. ALOYSIUS,
West Allis
Coach: Richard Olson
Athletic Director:
Richard Olson
Spiritual Director:
Rev. R. J. Mueller
Colors: Gold and Blue

4. Fischer, R.
9. Gurgull, E.
10. Weber, C.
11. Mehring, C.
12. Muhar, A.
15. Verburgt, A.

ST. ANN, Milwaukee
Coach: Fran. F. Millen
Athletic Director:
Leonard Kaiser
Spiritual Director:
Rev. Raymond Welter
Colors: Red and White

1. Lueders, R.
4. Scharfenberger, R.
5. Carney, R.
6. Scharfenberger, E.
12. Taibl, E.
15. Fuchs, R.
16. Murphy, E.
19. Zandt, R.

ST. AUGUSTINE,
Milwaukee
Coach: Joseph Wolf
Athletic Director:
John Loehrer
Spiritual Director:
Rev. J. Koenig
Colors:

Orange and Black

3. Schmidt, G.
4. Lenz, W.
7. Wendling, R.
8. Oppmann, R.
10. Wittmann, J.
11. Carrillo, C.
14. Kubagen, C.

ST. CASIMIR, Milwaukee
Coach: Syl. M. Linda
Athletic Director:
Sylvester M. Linda
Spiritual Director:
Rev. F. Hinz
Colors: White and Black

3. Batrukiewicz, R.
4. Jakubek, E.
5. Kiedrowski, R.
6. Kierecki, J.
7. Korol, H.
8. Kuszewski, A.
9. Ksicinski, B.
10. Romanowski, R.
11. Silko, E.

HOLY REDEEMER,
Milwaukee
Coach: Marcus Fugina
Athletic Director:
Marcus Fugina
Spiritual Director:
Rev. Louis Riedel
Colors: Black and White

1. Gross, A.
2. Gross, E.
3. Gross, F.
4. Pabst, D.
5. Van Roo, D.
6. Maly, A.
7. Dick, D.
8. Schuetz, L.
10. Kilbert, P.

ST. JAMES, Kenosha
Coach: Bernard Latham
Athletic Director:
Melzer Rhey
Spiritual Director:
Rev. Gerard J. Budde
Colors:

Green and White

2. Murphy, J.
3. Kotz, R.
4. Barnhill, J.
5. Zeihen, P.
6. Bode, W.
7. Rafferty, W.
8. Kausalik, W.
9. Elsen, G.

ST. JOSEPH,
Waukesha
Coach: Joseph Weiss
Athletic Director:
Edward Lohr
Spiritual Director:
Rev. Robert Bier
Colors: Red and Blue

3. Beller, R.
4. Sinkovits, J.
6. McCarragher, A.
7. Kruck, E.
9. Elger, A.
10. Anzvinio, M.
13. Petry, R.
16. Graham, N.
22. Weiss, G.

ST. MARK, Kenosha
Coach: J. Peter Larsen
Athletic Director:
J. Peter Larsen
Spiritual Director:
Rev. Bern. Scholzen
Colors: Red and Gold

33. Orgish, D.
34. Krimka, I.
35. Priddis, R.
36. Schmidt, D.
37. Werner, R.
38. Larsen, P.
39. Boerner, G.
40. Haun, D.

ST. MARY, Fond du Lac
Coach: Wm. Aylward
Athletic Director:
Ed. Mullen
Spiritual Director:
Rev. M. E. Zef's
Colors: Grey and Blue

3. Friedel, R.
4. Sondergard, D.
5. Erickson, H.
6. Schiller, G.
7. McGrath, D.
8. Dreifuerst, H.
9. Koenigs, R.
11. Erickson, C.
12. Koll, T.
22. Meyer, G.

ST. MARY CZEST.,
Milwaukee
Coach: Geo. Jablonski
Athletic Director:
Felix Nowicki
Spiritual Director:
Rev. M. Cieslewicz
Colors: White and Scarlet

- Banaszak, R.
- Binczak, R.
- Blaszczyk, H.
- Kotecki, E.
- Kowalewski, E.
- Kupczak, R.
- Posluszny, E.
- Wawrzyn, C.

ST. MATTHEW,
Milwaukee
Coach: F. J. Callan
Athletic Director:
Clement A. Smrz
Spiritual Director:
Rev. Vincent Thomas
Colors: Green and White

11. Benkendorf, C.
15. Engel, H.
16. Borkowski, F.
18. Certalic, H.
19. Krafcheck, K.
21. Murray, T.
22. Callan, P.
24. Bilot, W.
26. Bilot, L.

ST. PETER,
Beaver Dam
Coach: Earl Herdrich
Athletic Director:
Earl Herdrich
Spiritual Director:
Rev. H. Langenfeld
Colors:

Orange and Black

1. Kastenmaier, J.
2. Pshabelski, H.
3. Roedl, O.
4. Kovacs, J.
5. Maier, R.
6. Marthaler, J.
7. Deniger, E.
8. Hoch, F.

ST. ROBERT,
Shorewood
Coach: J. O'Donnell
Athletic Director:
James O'Donnell
Spiritual Director:
Rev. Robert Kemp.
Colors:

Orange and Blue

3. Szatkowski, J.
4. Fetherstone, J.
5. Doucette, W.
6. Hughes, D.
7. Ladky, J.
8. Hade, P.
9. Frisch, R.
10. Malaney, J.

ST. ROSE, Racine
Coach: Al Lizdas
Athletic Director:
Al Lizdas
Spiritual Director:
Rev. John Garland
Colors:

White and Green

3. Kostermann, W.
4. Miller, R.
5. Miller, G.
6. Wallace, H.
7. Driver, R.
8. Murphy, J.
9. Gilday, R.
10. Jackley, L.

ST. STANISLAUS,
Milwaukee
Coach: R. Michalski
Athletic Director:
Rev. S. Bartnicki
Spiritual Director:
Rev. S. Bartnicki
Colors: Red and White

3. Swieczak, M.
4. Skikiewicz, J.
5. Walzak, E.
6. Augustynowicz, W.
7. Niemczynski, G.
8. Bujak, G.
9. Jeka, F.

ST. STANISLAUS,
Racine
Coach: A. Ruszczyk
Athletic Director:
Albert Ruszczyk
Spiritual Director:
Rev. Anthony Czaja
Colors: Blue and White

3. Palinski, W.
4. Kuczynski, S.
5. Szczepanski, R.
6. Roszkowski, S.
7. Kucharski, R.
8. Kuzia, S.
9. Rojczewski, V.
10. Kucinski, G.
11. Czosnek, E.

JUNIOR TOURNAMENT LINE-UPS

<p>ST. FRANCIS, Milwaukee Coach: Wm. Schweizer Athletic Director: Peter Sager Spiritual Director: Rev. Bernardine, O.M.C. Colors: Red and White</p> <ol style="list-style-type: none"> 6. Koller P. 8. Ruberti, A. 9. Breines, L. 13. Monfre, P. 19. Schmid, R. 22. Millunzi, J. 24. Blanchard, D. 27. Koller, F. 31. Otterson, M. Clark, C. 	<p>HOLY NAME, Sheboygan Coach: Carlos Klein Athletic Director: Carlos Klein Spiritual Director: Rev. John H. Stehle Colors: Cardinal and White</p> <ol style="list-style-type: none"> 1. Ourada, J. 2. Stahl, A. 3. Laue, V. 4. Schieble, W. 5. Schilder, F. 6. Burkart, C. 7. Pittner, J. 8. Muehlbauer, A. Ayers, L. 	<p>ST. LEO, Milwaukee Coach: Frank Caravell Athletic Director: Edward Zirbes Spiritual Director: Rev. C. W. Spiege- hoff Colors: Gold and Blue</p> <ol style="list-style-type: none"> 3. Murphy, D. 4. Maertz, W. 5. Susnik, F. 6. Chic, F. 7. Kohl, R. 8. Bachmann, N. 9. Borzykowski, H. 10. Korpnick, R. 	<p>ST. PETER, Beaver Dam Coach: Earl Herdrich Athletic Director: Earl Herdrich Spiritual Director: Rev. H. Langenfeld Colors: Scarlet and Black</p> <ol style="list-style-type: none"> 1. Strumberger, J. 2. Pshebelski, R. 3. Baczynski, A. 4. Cook, L. 5. Notheis, J. 6. Kovacs, S. 7. Sommers, P. 8. Koch, F. Hahn, J.
<p>ST. GERARD, Milwaukee Coach: Elwood Dams Athletic Director: Elwood Dams Spiritual Director: Rev. Oliver Zinnen Colors: White and Orange</p> <ol style="list-style-type: none"> 2. Groth, G. 3. Wroblewski, E. 4. Michalak, E. 5. Gradecki, E. 6. Gradecki, H. 7. Murry, M. 8. Jurkowski, E. 9. Kulinski, E. 	<p>HOLY REDEEMER, Milwaukee Coach: James Van Roo Athletic Director: Marcus Fugina Spiritual Director: Rev. Louis Riedel Colors: Black and White</p> <ol style="list-style-type: none"> 1. Stoiber, J. 2. Driefurst, F. 3. Majewski, P. 4. Korsi, P. 5. Van Roo, R. 6. La Croix, G. 7. Boldt, H. 8. Gibert, R. 	<p>ST. MARY, Fond du Lac Coach: Robt. Neuberger Athletic Director: Edward Mullen Spiritual Director: Rev. M. E. Zertas Colors: Gold and Purple</p> <ol style="list-style-type: none"> 3. Wirkus, B. 4. Aylward, W. 5. Diedrich, J. 6. Sweeney, E. 7. Rothe, D. 8. Hilbert, R. 9. Engholdt, T. 11. Janzen, D. 12. Janzen, J. 	<p>ST. STANISLAUS, Milwaukee Coach: Francis Kabat Athletic Director: Rev. S. Bartnicki Spiritual Director: Rev. S. Bartnicki Colors: White and Red</p> <ol style="list-style-type: none"> 3. Ksobieck, A. 4. Krygiel, G. 5. Krupski, H. 6. Nowak, M. 7. Myszewski, R. 8. Michalski, R. 9. Struck, R. 13. Walczak, L.
<p>ST. HEDWIG, Milwaukee Coach: Frank A. Kondrakiewicz Athletic Director: George Lorbiecki Spiritual Director: Rev. Ign. Paczocha Colors: Yellow and Black</p> <ol style="list-style-type: none"> 4. Chmielecki, H. 5. Waranka, E. 6. Urban, F. 9. Knitter, G. 10. Rekowski, J. 11. Suminski, E. 12. Dzieminski, E. 	<p>HOLY TRINITY, Milwaukee Coach: Frank Bruce, Jr. Athletic Director: Frank Bruce, Jr. Spiritual Director: Rev. Fidelis Van Drumml, O. M. C. Colors: Purple and Gold</p> <ol style="list-style-type: none"> 4. Adrian, P. 5. Lenchek, J. 6. Mansfield, R. 7. Dersay, A. 8. Lesky, G. 10. Miller, W. 11. Stukel, E. 12. Royseck, F. 13. Spruck, A. 	<p>ST. MARY, Janesville Coach: Cletus Young Athletic Director: Cletus Young Spiritual Director: Rev. L. T. Busch Colors: Black and White</p> <ol style="list-style-type: none"> 3. McNally, F. 4. Smith, C. 5. Mead, G. 6. Monaghan, P. 7. McCue, B. 8. Palmer, J. 9. Ash, V. 10. Carney, T. 	<p>ST. STANISLAUS, Racine Coach: Ray Michalak Athletic Director: Albert Ruszczyk Spiritual Director: Rev. Anthony Czaja Color White and Scarlet</p> <ol style="list-style-type: none"> 3. Michalak, R. 4. Michalak, J. 5. Roszkowski, S. 6. Zyzniewski, J. 7. Piszczatowski, A. 8. Sokolowski, B. 9. Rosinski, S. 10. Burczyk, C. 11. Masiewicz, J. Czosnek, J.
<p>HOLY NAME, Racine Coach: Robert Ruemler Athletic Director: Robert Ruemler Spiritual Director: Rev. J. A. Schneider Colors: Maroon and Gold</p> <ol style="list-style-type: none"> 10. Thielen, R. 11. Karls, A. 12. May, L. 13. Karls, F. 14. Kohlman, F. 15. Erhardt, R. 16. Coyne, E. 17. Stratman, C. 	<p>ST. JAMES, Kenosha Coach: Joseph Fischer Athletic Director: Melzer Rhey Spiritual Director: Rev. Gerard J. Budde Colors: Black and White</p> <ol style="list-style-type: none"> 20. Serto, F. 21. Schmitz, J. 22. Cumiskey, R. 23. Smith, E. 24. Riley, T. 25. Richards, H. 26. Singer, J. 27. Willems, J. 	<p>ST. MARY, West Allis Coach: John Kostanjevec Athletic Director: John Kostanjevec Spiritual Director: Rev. J. J. Cherne Colors: White and Re</p> <ol style="list-style-type: none"> 3. Rauch, G. 4. Bevez, F. 5. Stimac, J. 6. Kralj, V. 7. Sekula, J. 8. Zagar, A. 9. Schwigel, W. 10. Zore, F. 11. Benesch, E. Lotter, R. 	<p>ST. THOMAS, Kenosha Coach: Martin Hudson Athletic Director: Louis J. Morin Spiritual Director: Rev. John J. Carroll Colors: Gold and Blue</p> <ol style="list-style-type: none"> 3. Hughes, W. 7. Haney, E. 12. Vernezze, J. 20. Fonk, W. 27. Woodward, W. 29. Stanley, M. 31. Cunningham, J. 33. Woodward, T.

CADET TOURNAMENT SCHEDULE

ST. STANISLAUS	Racine	}	WEDNESDAY, 6:30	}	SATURDAY, 2:00	}	SUNDAY, 7:00
ST. ANN	SUNDAY, 4:30 Milwaukee						
ST. ROBERT	Shorewood	}	TUESDAY, 6:30	}	SATURDAY, 3:00	}	CONSOLATION
ST. PETER	SUNDAY, 3:30 Beaver Dam						
ST. STANISLAUS	Milwaukee	}	TUESDAY, 9:30	}	SATURDAY, 3:00	}	SUNDAY, 2:00
ST. ALOYSIUS	SATURDAY, 2:30 West Allis						
ST. JAMES	Kenosha	}	THURSDAY, 6:30	}	}	}	}
HOLY REDEEMER	SUNDAY, 7:30 Milwaukee						
ST. MATTHEW	Milwaukee	}	}	}	}	}	}
ST. AUGUSTINE	SATURDAY, 1:30 Milwaukee						
ST. MARY CZEST.	Milwaukee	}	}	}	}	}	}
ST. MARK	SUNDAY, 8:30 Kenosha						
ST. MARY	Fond du Lac	}	}	}	}	}	}
ST. CASIMIR	SATURDAY, 4:30 Milwaukee						
ST. JOSEPH	Waukesha	}	}	}	}	}	}
ST. ROSE	SUNDAY, 1:30 Racine						

JUNIOR TOURNAMENT SCHEDULE

ST. PETER	Beaver Dam			
	SUNDAY, 2:30			
HOLY NAME	Sheboygan		WEDNESDAY, 9:30	
ST. MARY	Janesville			
	SUNDAY, 6:30			
ST. STANISLAUS	Racine		SATURDAY, 7:00	
ST. LEO	Milwaukee			
	MONDAY, 6:30			
ST. STANISLAUS	Milwaukee		WEDNESDAY, 7:30	
HOLY REDEEMER	Milwaukee			
	SUNDAY, 9:30			
ST. FRANCIS	Milwaukee			SUNDAY, 8:00
ST. GERARD	Milwaukee			
	MONDAY, 9:30			
HOLY TRINITY	Milwaukee		THURSDAY, 8:30	
ST. MARY	West Allis			
	SATURDAY, 3:30			
ST. MARY	Fond du Lac		SATURDAY, 4:00	
ST. JAMES	Kenosha			
	MONDAY, 7:30			
ST. THOMAS	Kenosha			CONSOLATION
HOLY NAME	Racine			
	MONDAY, 8:30			SUNDAY, 3:00
ST. HEDWIG	Milwaukee			

OPEN TOURNAMENT SCHEDULE

ST. ROBERT	Shorewood	} THURSDAY, 9:30	} SAT., 9:00 P. M.	} SUN., 9:00 P. M.
ST. FLORIAN	West Milw.			
ST. THOMAS	Kenosha	} THURSDAY, 7:30	} SAT., 9:00 P. M.	} SUN., 9:00 P. M.
ST. ADALBERT	South Milw.			
ST. PETER	Beaver Dam	} WEDNESDAY, 8:30	} SAT., 8:00 P. M.	} SUN., 9:00 P. M.
ST. THOMAS	Milwaukee			
ST. ROSE	Racine	} TUESDAY, 8:30	} SAT., 8:00 P. M.	} CONSOLATION
ST. MARK	Kenosha			
				} SUN., 4:00 P. M.

OPEN TOURNAMENT LINEUPS

ST. ADALBERT,
South Milwaukee
Coach: John Tanski
Athletic Director:
John Tanski
Spiritual Director:
Rev. S. Szczerbiak
Colors:
White and Black
1. Swendrowski, J.
2. Tanski, J.
3. Dronek, E.
4. Kaczanowski, A.
5. Wisniewski, S.
6. Zbikowski, S.
7. Zembrzowski, C.
8. Guziewski, F.
9. Swierzynski, C.

ST. FLORIAN,
West Milwaukee
Coach: Richard Bull
Athletic Director:
John Bull
Spiritual Director:
Rev. R. Heinz, O.C.D.
Colors:
Purple and White
21. Bliesner, J.
22. Bull, John
23. Mills, W.
24. Schunk, L.
25. Berger, A.
26. Sommerfeld, J.
27. Krolikowski, L.
28. Golsteyn, J.

ST. MARK, Kenosha
Coach: Bob Jacobson
Athletic Director:
J. Peter Larsen
Spiritual Director:
Rev. Bern. Scholzen
Colors: Red and Gold
4. Harris, D.
10. McGill, J.
11. Hugunin, G.
14. Hendrickson, G.
15. Kopecki, E.
16. Cleveland, D.
17. Jacobson, R.
18. Jacobson, N.
20. Klacynski, G.
21. Schmitz, R.

ST. PETER,
Beaver Dam
Coach: Earl Herdrich
Athletic Director:
Earl Herdrich
Spiritual Director:
Rev. H. Langenfeld
Colors:
Orange and Blue
3. Bauer, H.
4. Willihnganz, S.
5. Draeger, F.
6. Kaiser, R.
7. Budde, R.
8. Budde, H.
9. Heimler, A.
10. Kronenberg, H.
Notheis, J.
Kronenberg, L.

ST. ROBERT,
Shorewood
Coach: J. O'Donnell
Athletic Director:
James O'Donnell
Spiritual Director:
Rev. Robert A. Kemp
Colors: Blue and Gold
3. Schumaker, N.
4. De Lorenzo, F.
5. Russell, J.
6. Sonnenberg, R.
7. Traudt, J.
8. Benzing, A.
9. Drew, J.
10. Hayes, H.
11. Budnick, H.
12. Schrader, J.

ST. ROSE, Racine
Coach: Al. Lizdas
Athletic Director:
Al. Lizdas
Spiritual Director:
Rev. John Garland
Colors:
White and Green
3. Vinkowicz, A.
4. Lizdas, A.
5. Bingham, C.
6. Lizdas, E.
7. Carroll, R.
8. Hogan, J.
9. Hegeman, R.
10. Buckley, E.
11. Brinkman, C.
12. Rothering, H.

ST. THOMAS
AQUINAS, Kenosha
Coach: Martin Hudson
Athletic Director:
Louis J. Morin
Spiritual Director:
Rev. John J. Carroll
Colors: Gold and Blue
3. Hughes, R.
4. Blank, E.
5. Barrett, J.
6. Kollmann, T.
8. Stanley, E.
11. Clarke, R.
13. Morrisson, R.
21. Herrmann, K.
24. Werve, R.

ST. THOMAS
AQUINAS, Milw.
Coach, Charles Boblick
Athletic Director:
James F. Crotty
Spiritual Director:
Rev. Edw. Kinney
Colors:
Green and White
3. Grace, R.
4. Bowe, P.
5. Tiry, R.
8. Scholl, R.
9. Goggins, R.
11. Crowley, J.

ELECT



WILLIAM F.
SHAUGHNESSY

CIRCUIT JUDGE

Branch No. 9

Lived in Milwaukee forty-five years.

Practiced law in Milwaukee twenty years.

Appointed Court Commissioner by Circuit Court.

Former Deputy District Attorney.

Married and father of six children.

Authorized and paid for by Shaughnessy For Circuit Judge Club, Stephen Lewandowski, Secretary,
161 W. Wisconsin Avenue, Milwaukee, Wisconsin.

WE KEEP OUR PRICES DOWN
BY KEEPING OUR EXPENSES DOWN
McCUE BROTHERS



Where
Better
PAINTS
are
Sold



62ND AND GREENFIELD

A. J. Rebholz F. A. Riedmueller
W. E. Thielecke

REBHOZ
RIEDMUELLER
THIELECKE

Complete Insurance Service

607 Brumder Bldg.

135 W. WELLS STREET
MARquette 2520

COMPLIMENTS
OF A FRIEND

A. J. GAHN

Quality Meats

2851 N. Oakland Ave.
2221 E. Capitol Drive

MILWAUKEE PERE
MARQUETTE COUNCIL

No. 524

Knights of Columbus

ELECT

Charlie F. HIGGINS

TO BOARD OF
SCHOOL DIRECTOR

Primary — March 16

Authorized and paid for by Timothy S. Higgins,
1735 N. 38th Street.

PROTECT YOUR
WIFE and CHILDREN

if you have a
Mortgage on Your Home
under the
Mortgage Protection Plan of the
Catholic Knights of Wisconsin
A Legal Reserve Catholic Insurance Institution
for Wisconsin Catholics

Those near and dear to you may
be Fatherless — but not Homeless
You Owe This Protection to Them
A Millionaire Organization
Inquire about this plan from our representative
or write or call

J. M. CALLAHAN, *State Secretary*
Home Office: 812 E. State St.,
Milwaukee, Wis.

CATHOLIC
FAMILY PROTECTIVE
ASSOCIATION

— of *Wisconsin* —

1012 N. Third St. Milwaukee, Wis.

Milwaukee Church Supply Co.
and
European Statuary and Art Co.

1125 E. Potter Avenue
SHERidan 3610

DORSEY
Incorporated
ADVERTISING
TYPOGRAPHERS
1443 N. FIFTH STREET

The Tournament Trophy and Medal Donors

TROPHIES

Hon. Wm. George Bruce	Hon. Raymond J. Cannon
	Hon. John C. Kleczka
Val. Blatz	Dr. Francis D. Murphy
George Haas	Henry R. Slaby
Eric Hess	Final H. Young

MEDALS

Hon. F. Ryan Duffy	Hon. Thomas O'Malley
Hon. Thaddeus J. Pruss	Hon. M. K. Reilly
	Hon. Michael S. Sheridan
Edward F. Byron	Harry S. Inkmann
Martin J. Daly	Harry G. John, Jr.
Edward J. Dempsey	William Kinsella
Humphrey Desmond	T. F. Mitchell
Dr. W. J. Egan	Joseph C. Moser
Dr. Edward F. Fitzpatrick	Robert H. Rolfs
E. J. Furlong	Dr. Theodore H. Rolfs
Stephen J. Hoff	Ray Smith

COURTENAY & WHITE

Insurance — Real Estate

728 N. Jefferson Street

DALY 1756

ALBERT BRUSKIEWITZ

Funeral Director

DAY AND NIGHT SERVICE

LADY ASSISTANT

2101 W. Mitchell St. Mitchell 1013

MILWAUKEE SAUSAGE CO., INC.

TASTY SAUSAGE

1334 W. National Avenue

Phone ORchard 6655 Milwaukee, Wis.

Compliments of

ST. JOSEPH'S HOSPITAL

5000 W. Chambers Street

Headquarters for

Medals — Trophies Awards

THOMAS C. KATKE

Bunde & Upmeyer Jewelry Mfg. Co.

248 PLANKINTON BLDG.

Milwaukee, Wisconsin

S. F. PEACOCK & SON

1028 N. VAN BUREN ST.

MILWAUKEE

TELEPHONE DALY 5050

TRANSFER STORAGE

SHINNERS BROS

FIRE PROOF STORAGE

MOVING, PACKING and SHIPPING

448 N. 6th St. 513-519 N. 14th St.

OFFICE WAREHOUSE

BROADWAY 0566 BROADWAY 1356
MILWAUKEE, WISCONSIN

NEIL J. GLEASON & CO.

611 North Broadway

Milwaukee

Telephone MARquette 3332



Compliments of

LUICK DAIRY COMPANY

THE MERRILL AGENCY, Inc.

ESTABLISHED 1893

Insurance -- Surety Bonds

W. Michigan at N. Eighth Streets

Milwaukee

Re-Elect

MICHAEL S. SHERIDAN

COUNTY JUDGE

AETNA LIFE INSURANCE COMPANY

ALBERT E. MIELENZ, *Gen. Agent*

3rd Floor, First Wis. National Bank Bldg.

Milwaukee, Wis.

CLEM. P. HOST COMPANY INSURANCE

135 W. Wells St. 212 Brumder Bldg.

MARquette 6554

Milwaukee, Wis.

HOLY NAME SOCIETY'S Catholic Youth Program

Archdiocesan Champions

1934 Outdoor Track	St. Mary, Port Washington
1934 Junior Fall Softball	St. Hyacinth, Milwaukee
1934 Cadet Fall Softball	St. Gerard, Milwaukee
—————•—————	
1935 Junior Basketball	St. Mary, Fond du Lac
1935 Cadet Basketball	St. Rose, Milwaukee
1935 Boxing	} St. Ann, Milwaukee } St. Stanislaus, Milwaukee
1935 Junior Baseball	
1935 Junior Softball	St. Matthew, Milwaukee
1935 Cadet Softball	St. Sebastian, Milwaukee
1935 Outdoor Track	St. Monica, Whitefish Bay
1935 Junior Football	St. Mary Czestochowa, Milwaukee
1935 Cadet Football	St. Mary Czestochowa, Milwaukee
—————•—————	
1936 Junior Basketball	St. Robert, Shorewood
1936 Cadet Basketball	St. Francis, Milwaukee
1936 Boxing	St. Francis, Milwaukee
1936 Wrestling	St. Thomas Aquinas, Milwaukee
1936 Swimming	St. Michael, Milwaukee
1936 Junior Baseball	St. Gerard, Milwaukee
1936 Junior Softball	St. Vincent de Paul, Milwaukee
1936 Cadet Softball	St. Vincent de Paul, Milwaukee
1936 Outdoor Track	St. Monica, Whitefish Bay
1936 Junior Football	St. Mary Czestochowa, Milwaukee
1936 Cadet Football	St. Mary Czestochowa, Milwaukee
—————•—————	
1937 Open Basketball	
1937 Junior Basketball	
1937 Cadet Basketball	

Compliments

WEYENBERG SHOE Mfg. Company

Milwaukee, Wisconsin

Makers of Fine Footwear for Men and Boys
—at Popular Prices



R 703

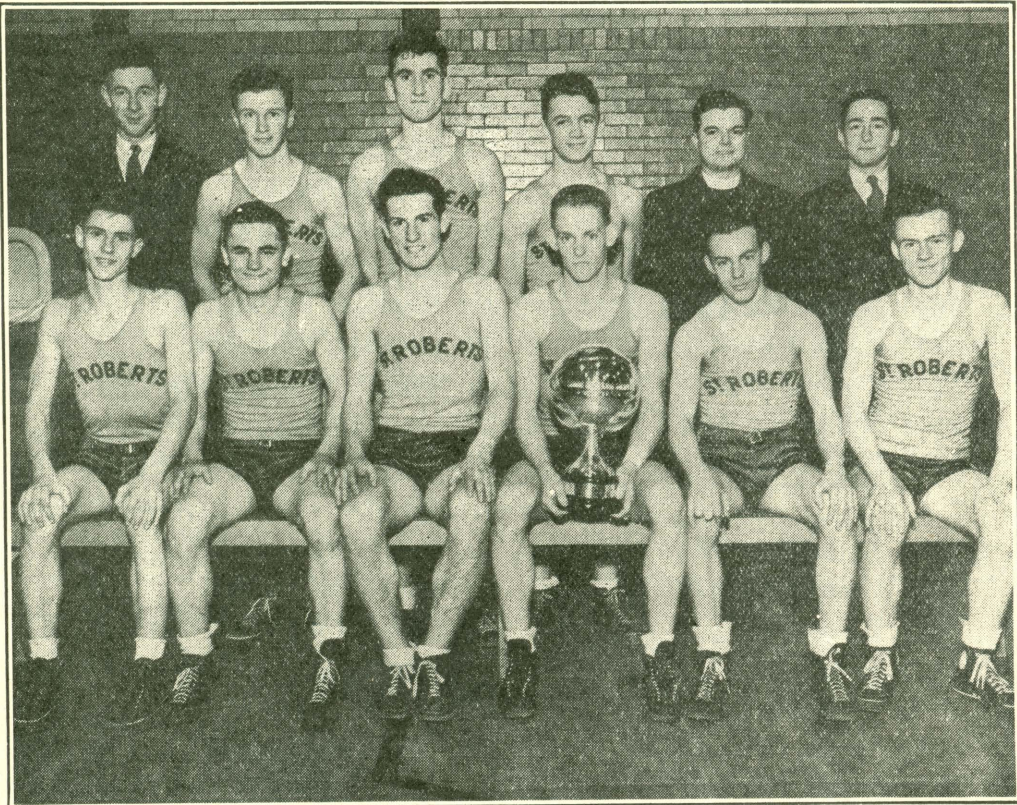
"Trophies for Champions"
Medals, Athletic Awards,
Class Rings and Pins



Fred J. Theleman, Inc.

617 N. Second St.

DAly 0661



ST. ROBERT, SHOREWOOD, 1936 JUNIOR CHAMPIONS

Front Row, left to right—Neal Gleason, Anthony Benzing, John Dean, Capt. John Drew,
Francis Larscheid, Hyacinth Budnick.
Rear Row—Mgr. John Mallon, James Dodge, Norbert Schumaker, Max Grefig, Rev. Robert A.
Kemp, Coach John Whelan.

Compliments of

E. M. LOHMAN CO.

St. Paul, Minn.

O. R. PIEPER CO.

Institutional Food Jobbers
Founded 1885

Milwaukee

Eagle River

Scouting

REV. RALPH J. ALSTADT

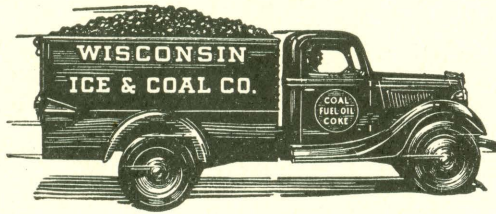
Scouting is a tried and true boy program. More than a quarter century has elapsed since its inception. Scouting is not an organization, but a movement offering a program of activities for boys to institutions that will accept it. The Boy Scouts of America do not actually conduct troops themselves, but require a sponsoring body, preferably a church. The executive staff offers whatever assistance a troop may need, and promotes scouting in general. The actual conduct of the troop and the application of the scout program depends upon the parish or sponsoring group. The Scout movement as such is non-sectarian; it cannot in any sense be labeled denominational. Scouting does insist, however, in season and out of season, upon the necessity of religion. It considers that religion is to be taken care of by those chosen and qualified to teach it, namely, the Church, the sponsoring group.

Scouting has a natural appeal to the average boy especially if he is imbued with a spirit for adventure and is a lover of the out-of-doors. The Archbishop's Catholic Youth Program, appreciating the real value of the Boy Scout movement, has made it an integral part of its activities. As a matter of efficiency, a Catholic Committee on Scouting, composed of members from the Holy Name Society, has been set up, whose duty it is to promote and regulate Scouting just as the other Holy Name activities, cultural and athletic, are promoted and regulated. It is the further duty of this Committee to aid those parishes desiring a troop, to render whatever assistance may be necessary. Another important task of the Committee is to remain in constant contact with the Bishop's National Committee on Scouting and to act as a medium between the parish troop and the scout office, thereby keeping scouting officials always intelligently informed concerning Church policies.

Scouting has a great appeal to the American boy. The Archbishop's youth program recognizes the experience of a successful boy program; hence the wisdom of incorporating the Scout movement in the Holy Name program and giving to our Catholic boys that which they desire — another wholesome healthy activity.

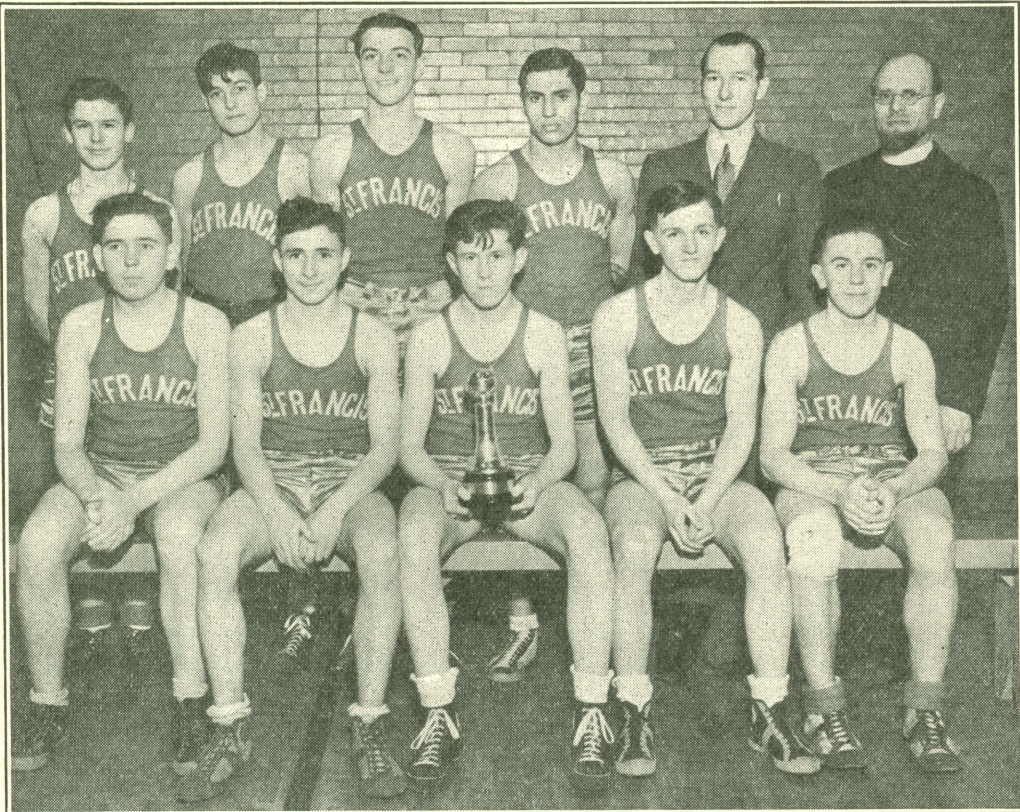
“Every Catholic Boy Scout in a Catholic troop” — that is the motto and aim of the Catholic Committee on Scouting.

COKE
 FUEL-OIL COKE
 ICE
 Call LAKESIDE 4880



See the New
 Air Conditioned
 ICE
 REFRIGERATOR

at Our
 Sales Rooms
 1522
 East North
 Avenue



ST. FRANCIS, MILWAUKEE, 1936 CADET CHAMPIONS

Front Row, left to right—Erwin Brandt, John Millunzi, Capt. Peter Koller, Kenneth Mann, Louis Breines.

Rear Row—Joseph Nardelli, Caesar Ossena, John Stenglein, Ignatius Riccardi, Coach Raymond Brown, Rev. Bernardine Schlimgen, O. M. Cap.

TELEPHONE MARQUETTE 4483.

Compliments of

HARRY V. MEISSNER

ATTORNEY AT LAW

907 EMPIRE BUILDING

196 WEST WATER STREET — MILWAUKEE.

EMMETT F. COOK

Candidate full term

SCHOOL BOARD DIRECTOR

PRIMARIES TUESDAY, MARCH 16, 1937.

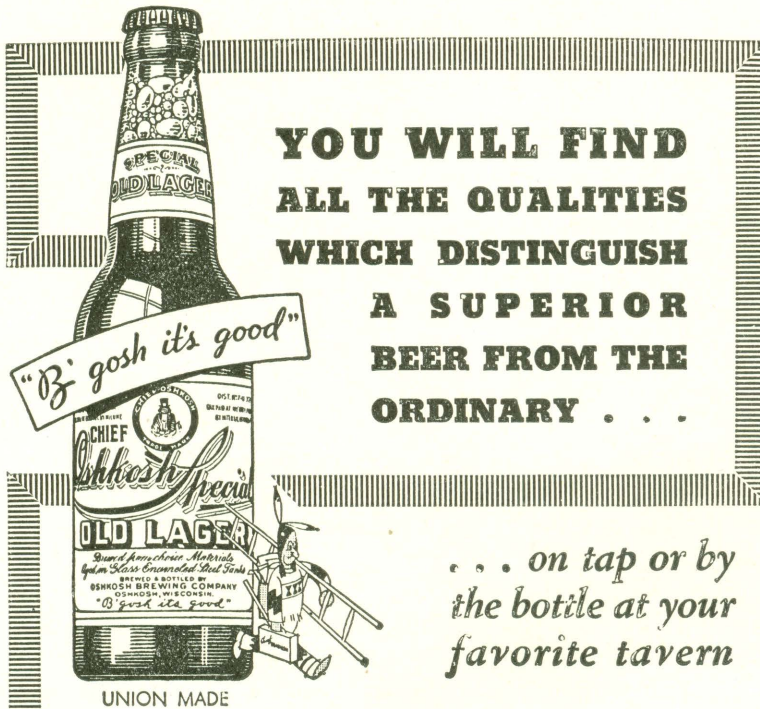
Authorized and paid for by Emmett F. Cook, 4738 W. Lisbon Avenue.

PATRONS

Rt. Rev. Msgr. S. Bernard	Rev. C. F. Keyser
Rt. Rev. Msgr. A. C. Brieg	Rev. R. Kielpinski
Rt. Rev. Msgr. B. E. Goral	Rev. Edward M. Kinney
Very Rev. Msgr. M. F. McEvoy	Rev. Joseph Knitter
Rev. Roman Atkielski	Rev. Alexander Kosobucki
Rev. F. Bozenek	Rev. James Kozak
Rev. Nicholas Brust	Rev. Nicholas Maas
Carmelite Fathers	Rev. Ferd. A. Mack
of St. Florian's Parish	Rev. Anthony F. Makowski
Rev. Paul Chrzan	Rev. James Maurer, P. S. M.
Rev. Paul S. Croke	Rev. Wm. P. O'Connor
Rev. A. M. Dentinger	Rev. Stephen Peil
Franciscan Fathers	Rev. F. J. Pettit
of St. Josaphat's Parish	Rev. L. Sarnowski
Rev. John J. Grasser	Rev. John Shanahan
Rev. Wm. V. Groessel	Rev. Henry Velte
Rev. Otto Haertle	Rev. Cyril Volz
Rev. Francis J. Haas	Rev. Leo Wedl
Rev. Jos. J. Heim	Rev. A. A. Wissink
Rev. Joseph Heller	Rev. S. B. Witkowiak
Rev. Peter Leo Johnson	

BEER KEPT UNDER ELECTRIC REFRIGERATION
AT ALL TIMES

"TOPS" IN BEER DISTRIBUTING



Chief **OSHKOSH**
SPECIAL OLD LAGER BEER

TONY BERG

Wholesale and Retail

Soft Drinks

Gas Drums

Day and Night Delivery Service

1201 S. First Street

Mitchell 8040
Concord 6691

PATRONS

ATTORNEYS

- Anton Augustine
135 W. Wells St.....DA 0130
- Stephen A. Barrett
7006 W. Greenfield Ave. GR 2075
- Willard A. Bowman
606 W. Wisconsin Ave. DA 4560
- Bernard V. Brady
229 E. Wisconsin Ave. DA 0435
- William E. Burke
622 N. Water St.....DA 2030
- Emmett J. Carrigan
706 Majestic Bldg.....MA 5286
- Newman Clarke
756 N. Milwaukee St....DA 0835
- Russell G. Crotty
231 W. Wisconsin Ave. MA 4953
- John J. Dunn
212 W. Wisconsin Ave. MA 4494
- Ward Dunphy
3570 E. Layton Ave.....SH 6280
Cudahy
- Robert A. Ewens
1639 N. Twelfth St.....CO 1770
- Will C. Gobel
108 W. Wells St.....DA 5100
- Robert J. Gunnis
259 E. Wells St.....MA 4113
- Charles A. Hansen
1102 S. Sixteenth St.....MI 4422
- Harvey Hartwig
238 W. Wisconsin Ave. DA 1617
- A. B. Houghton
152 W. Wisconsin Ave. MA 0315
- J. R. Jones
740 N. Plankinton Ave. DA 6340
- H. William Ihrig
A Friend
- Kersten & McKinnon
231 W. Wisconsin Ave. MA 0054
- Thomas E. Leahy
111 E. Wisconsin Ave. DA 0249
- Patrick J. McCaffrey
606 W. Wisconsin Ave. DA 3187
- Terence P. McDermott
710 N. Plankinton Ave. DA 1824
- John E. Martin
709 N. Eleventh St.....MA 6180
- Irving P. Mehigan & Geo. A. Burns
Bankers BuildingDA 0324
- Erwin V. Novotny
4709 W. Lisbon Ave.....KI 2000
- John O'Meara
161 W. Wisconsin Ave. DA 4379
- Joseph A. Padway
212 W. Wisconsin Ave. MA 4500
- Charles H. Phillips
1409 N. 27th St.....WE 2944
- Edward C. Plantz
3612 W. North Ave.....KI 9617
- Morris Podell
808 N. Third St.....MA 2341
- Gerald Powers
161 W. Wisconsin Ave. MA. 0871
- Max Raskin
606 W. Wisconsin Ave. DA 4557
- Samuel J. Schrinsky
161 W. Wisconsin Ave. MA 3545
- William F. Shaughnessy
161 W. Wisconsin Ave. DA 6816
- Sheridan & O'Neil
710 N. Plankinton Ave. MA 1158
- Herbert Steffes
District Attorney, Milw. County
- Roland J. Steinle
739 N. Broadway.....MA 3177
- Elmer A. Styne
647 N. Third St.....MA 6950
- Rud W. Talsky
135 W. Wells St.....DA 3193
- Leo J. Topolinski
238 W. Wisconsin Ave. MA 0067
- Herbert L. Wible
231 W. Wisconsin Ave. MA 3210
- Arvid B. Weller
324 E. Wisconsin Ave. DA 1198

*With Sincerest Greetings and
Success to the Tournament*

A FRIEND

PATRONS

DENTISTS

- L. W. Burke
1208A W. Walnut St. CO 5515
- A. J. Cardinal
2522 E. Capitol Dr.....ED 1469
- Charles L. Christiansen
308 W. North Ave.....CO 5655
- Coad A. Cooper
5926 W. Vliet St.....BL 1127
- H. A. Copsy
2905 W. Clybourn St. WE 2330
- R. N. DeMars
1409 N. 27th St.....WE 1800
- A. A. Doering and S. M. O'Malley
2906 W. Forest Home MI 1217
- R. W. Doherty
5104 W. Center St.....HI 2521
- Edward Flynn
4050 Plankinton Bldg. DA 4002
- Harold E. Foy
5408 W. Lloyd St.....KI 0580
- M. D. Garfield
2933 W. Vliet St.....WE 2421
- Alex L. Goral
830 E. Center St.....LO 5093
- Dan Healy
4364 N. 27th St.....HI 5859
- H. J. Hinkamp
3289 N. 27th St.....KI 9562
- Herbert O. Hoppe
1331 W. Vliet St.....MA 0122
- Arthur J. Jessel
231 W. Wisconsin Ave. MA 2055
- J. E. Koss
503 N. 29th St.....WE 6989
- L. E. Kress
4815 W. North Ave.....HO 4803
- Marshall D. Loughlin
4811 W. North Ave.....KI 6168
- C. S. McCarty
367 E. Rosedale Ave.....SH 3054
- William A. McGill
7611 Harwood Ave.BL 4843
Wauwatosa
- G. E. Melchior
4738 W. Lisbon Ave.....KI 6186
- C. R. and H. B. Morgenroth
3525 W. North Ave.....KI 6415
- S. E. Ochsner
539 N. Hawley Rd.....BL 3043
- William E. O'Meara
5030 W. Burleigh St.....HI 7420
- J. E. Pinter
2687 S. Kinnickinnic.....SH 0758
- L. P. Schaller
135 W. Wells St.....DA 1911
- William H. Schaller
135 W. Wells St.....DA 1911
- Dudley Stockwell
1204 W. Wisconsin Ave. BR 9558
- Arnold Strauss
3335 N. Green Bay Ave. LO 7960
- G. P. Sutton
1035 W. Center St.....LO 6240
- Anna B. Swinney
747 N. 27th St.....WE 7873
- N. E. Uelman
324 E. Wisconsin Ave. DA 3454
- E. G. Wisniewski
802 E. Center St.....LO 4899
- Robert E. Wittig
425 E. Wisconsin Ave. DA 2979
- George L. Wolter
1124 W. Walnut St.....LO 6409

THESE CATHEDRAL
CONTRACTORS
WISH SUCCESS TO THE
ARCHBISHOP'S CLASSIC

MILWAUKEE
STRUCTURAL
STEEL CO.

42nd and State Streets
Milwaukee, Wisconsin

STENZ ELECTRIC CO.

Electrical Contractors
924 North Edison Street

STOEHR and
LAUDON, Inc.

Heating -- Plumbing
Ventilating -- Sheet Metal
1707-11 W. Clybourn Street
Phone WEST 7660

GEO. J. STAEHR, *President*
E. W. LAUDON, *Vice President*

Everything in Hardware
J. KORNELY HARDWARE CO.

MILWAUKEE'S LEADING
STOVE HOUSE

2308 N. Third Street

Continued Success

— TO —

The Catholic Youth Program
Marquette Woman's League

1559 N. Prospect Avenue
Milwaukee, Wis.



Milwaukee Sporting Goods Co.

809 North Second Street

Milwaukee, Wisconsin.

MARQUETTE 1566.

A Friendly Place to Buy Your Sporting Goods.

This Book was printed
by the

NOWINY PUBLISHING CO.

PRINTERS -- PUBLISHERS

1226 W. Mitchell St. Mitchell 1580



TIME SCHEDULE OF GAMES

At Holy Name Society Gymnasium, 225 E. Michigan St.

Sat., March 6 — 1:30, 2:30, 3:30, 4:30

Sun., March 7 — 1:30, 2:30, 3:30, 4:30
6:30, 7:30, 8:30, 9:30

At Marquette High School Gymnasium, 3401 W. Wisconsin Ave.

Mon., March 8 — 6:30, 7:30, 8:30, 9:30

Wed., Mar. 10 — 6:30, 7:30, 8:30, 9:30

Tue., March 9 — 6:30, 7:30, 8:30, 9:30

Thu., Mar. 11 — 6:30, 7:30, 8:30, 9:30

Friday, March 12 — NO GAMES

Saturday, March 13 — 2:00, 3:00, 4:00

(semi-finals)

7:00, 8:00, 9:00

(semi-finals)

Sunday, March 14 — 2:00, 3:00, 4:00

(consolation)

7:00, 8:00, 9:00

(Finals)

PATRONS

PHYSICIANS and SURGEONS

- Felix Aussendorf
3330 W. Lisbon Ave.....KI 1503
- F. J. Baur
2107 S. 20th St..... MI 0176
- H. T. Brogan
6124 W. National Ave. GR 0337
- C. J. Coffey
231 W. Wisconsin Ave. MA 4031
- John A. Cox
2652 W. Fond du Lac...KI 2498
- James G. Curtin
807 N. 21st St..... WE 0063
- George E. Collentine
239 W. Center St. LO 0360
- E. J. Craite
716 N. Eleventh St.....MA 4471
- Raymond J. Dalton
709 N. Eleventh St.....MA 0108
- Diamond and Wetzler
105 W. Mitchell St. MI 3511
- F. J. Fechter
308 W. North Ave. LO 0274
- J. P. Featherstone
2702 N. Third St..... CO 7913
- J. A. Froelich
308 W. North Ave..... LO 8358
- L. J. Hargarten
3500 N. Green Bay Ave. CO 4645
- E. T. Harrington
2132 W. Walnut St. KI 7787
- Samuel G. Higgins
324 E. Wisconsin Ave. DA 0124
- G. H. Hoffman
7006 W. Greenfield Ave. GR 3504
- T. J. Howard
716 N. Eleventh St.MA 3435
- John R. Hughes
231 W. Michigan Ave. DA 6600
- L. J. James
5104 W. Center St..... HI 8242
- William M. Jermain
1705 W. Wisconsin Ave. WE 6310
- William E. Kiley
J. W. Kleinboehl
231 W. Wisconsin Ave. MA 1096
- O. F. Krueger
2782 N. Teutonia.....LO 0632
- G. E. Meloy
5503 W. North Ave..... KI 1424
- John McCabe
4718 W. Lisbon Ave.KI 8376
- Myron T. McCormack
747 N. 27th St. WE 3141
- Robert E. McDonald
425 E. Wisconsin Ave. DA 6305
- N. W. McKittrich
425 E. Wisconsin Ave. DA 6808
- J. M. Molsberry
208 E. Wisconsin Ave. DA 5409
- Edward J. O'Neill
2906 W. Forest Home .. MI 3227
- I. B. Reifenrath
2708 W. Center St..... KI 3901
- E. M. Rice
805 S. Fifth St..... MI 2787
- L. J. Schneeberger
5030 W. Burleigh St. HI 7420
- R. P. Sproule and J. S. Gordon
208 E. Wisconsin Ave. DA 3873
- J. S. Stefanz
602 S. Sixth St. MA 7328
- E. H. Sutter
1335 W. Madison St.....MI 0231
- Edward D. Wilkinson
5920 W. Burnham St.....MI 8472
- Thomas Willett
1585 S. 80th St..... GR 0176

PATRONS

American State Bank
E. Brielmaier & Sons Company
W. F. Cavanaugh
William L. Coffey
Commercial Stationery
& Office Supply Company
Laurence Conway
Joseph M. Crowley
739 North Broadway
Daughters of Isabella
C. R. Dineen
1633 N. Thirteenth Street
F. L. Greenya
Joseph C. Griffith
R. M. Hall, M. D.
A. W. Hankwitz, M. D.
Dr. Roy T. Hansen
Julius P. Heil
1319 N. Third Street
W. J. Herrmann, Inc.

Jacobsen Manufacturing Company
Racine, Wisconsin
Thomas A. Judge
John Koerner
Lalumiere League
Marquette Woman's League
J. R. McQuillan
Assistant Manager
Home Owners Loan Corp.
Roberts Company
944 N. Jackson Street
H. Schmidt & Son, Inc.
Judge Daniel Sullivan
Frank M. & Joseph Surges
Teutonia State Bank
Ernest Untermann
Washington Park Zoo
Frank Wabiszewski
West Side Bank

COMPLIMENTS OF THE

West Bend Aluminum Company

WEST BEND, WISCONSIN

GET THERE WITH

W A D H A M S

BY ROAD or RADIO

MOBILGAS

MOBILOIL

WISHING SUCCESS TO
ST. ROBERT'S TEAMS

THE CONTRACTORS ENGAGED IN ERECTING
THE NEW ST. ROBERT'S CHURCH

Tel. BRoadway 0744

A. F. WAGNER
Iron Works
MANUFACTURERS OF
*Ornamental, Architectural
and Structural Iron Work*

Page Chain Link Fence
A. A. WAGNER, Vice President
OFFICE AND WORKS:
1483 to 1491 N. Water Street
MILWAUKEE, WIS.

**CENTRAL READY-MIXED
CONCRETE CO.**

ORIGINATORS

127 S. 11th St. Mitchell 8888
MILWAUKEE, WISCONSIN

DOWNEY
HEATING
COMPANY

STEAM AND HOT WATER
HEATING

POWER PLANTS AND
SHEET METAL WORK

4878 N. 35th St. Milwaukee, Wis.

U. F. DURNER COMPANY

INCORPORATED

Floor and Wall Tile
Roman and Venetian Mosaic Art Terrazzo

815-17 W. St. Paul Avenue
Telephone MArquette 3548 Milwaukee, Wis.

JOS. WITTIG CO.

ESTABLISHED 1865

PLUMBING CONTRACTORS

Phone DAly 1057 1135 N. Water St.

LOUIS HOFFMANN CO.

Sheet Metal Works

Tel. DAly 2695 117 W. Pittsburgh Ave.
MILWAUKEE, WIS.

P. SCHMIDT & CO., Inc.

CUT STONE

3230 Lancaster Avenue
Milwaukee, Wisconsin

Telephone DAly ²⁵⁸⁷
₂₅₈₈

KNOERR & FISCHER Inc.

ELECTRICAL
CONTRACTORS

1015 N. MILWAUKEE STREET
MILWAUKEE, WIS.

**WAUWATOSA FUEL
& SUPPLY COMPANY**

7700 Harwood Avenue

Bluemound 2760

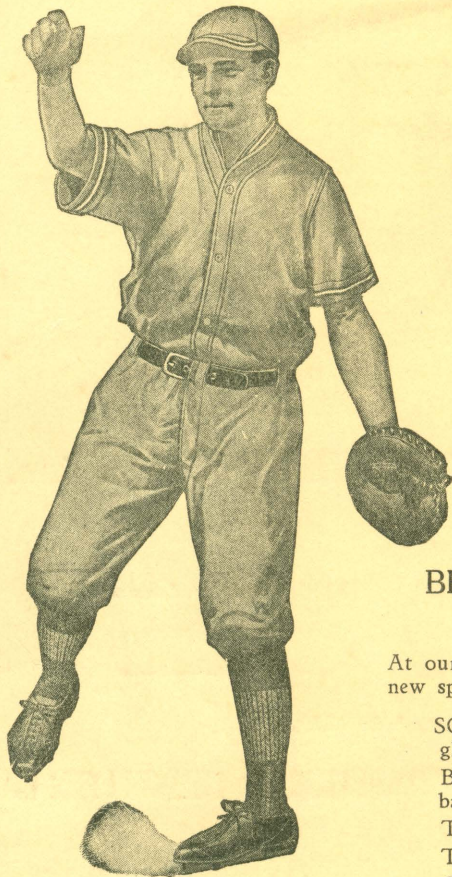
Wauwatosa, Wisconsin

Tel. EDgewood 0270

C. HENNECKE CO.

*Structural Steel and Miscellaneous
Iron Work*

3225 N. Pierce Street
Milwaukee, Wisconsin



This Season Go Places with
College Athletic Equipment

This Spring purchase softballs, baseballs, gloves, mitts, uniforms, bats, and trophies bearing the following trade marks. These manufacturers have a national reputation for quality sporting goods at low prices.

DODGE TROPHIES
GOLDSMITH
CONVERSE
GENERAL ATHLETIC
LOUISVILLE SLUGGERS
COLLEGE ATHLETIC
BASEBALLS & SOFTBALLS

BE SURE TO VISIT US DURING
THE TOURNAMENT

At our great store you will now find complete stocks of new spring and summer equipment on display.

SOFTBALL jerseys, shirts, pants, shoes, knickers, gloves, masks, mitts, bats, and balls.

BASEBALL gloves, mitts, bats, uniforms, balls, bases, etc.

TROPHES — for every branch of sports.

TENNIS RACKETS — of the famous Lee brand.

GOLF — for the amateur or the champion by Hagen.

Badminton, Archery, Paddle Tennis, Swimming, Horseshoes, and Gift and Prize Department are other items that make this great store a complete sporting goods headquarters.

YOU'LL find our courteous sales staff glad to assist you or submit to you any article you desire to see.

We remind you, YOU'RE ALWAYS WELCOME at

The College Athletic Supply Co.

SPORTING GOODS EXCLUSIVELY

749 N. Plankinton Ave.

Between West Wisconsin and West Wells Streets, Milwaukee, Wis.